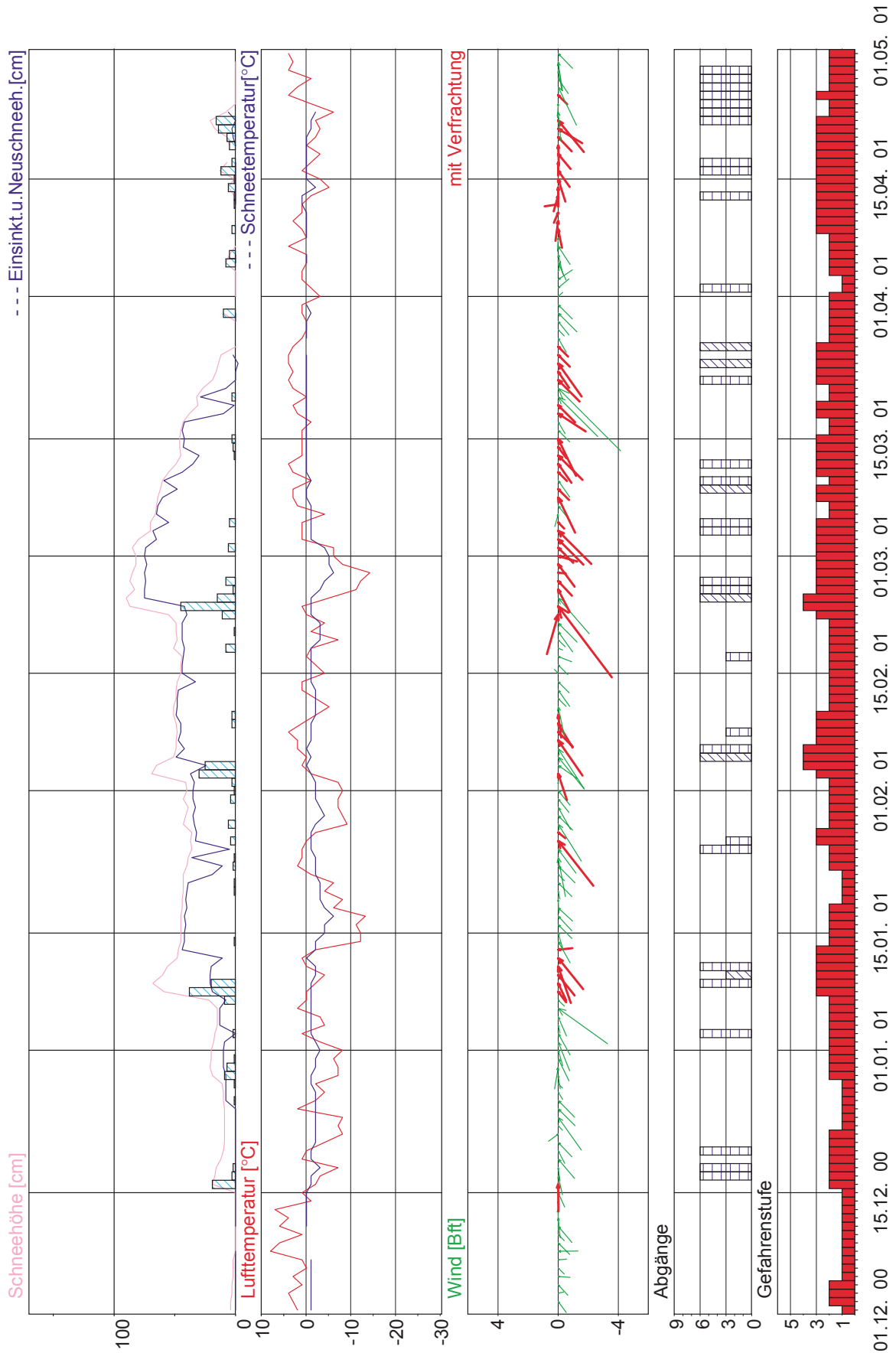


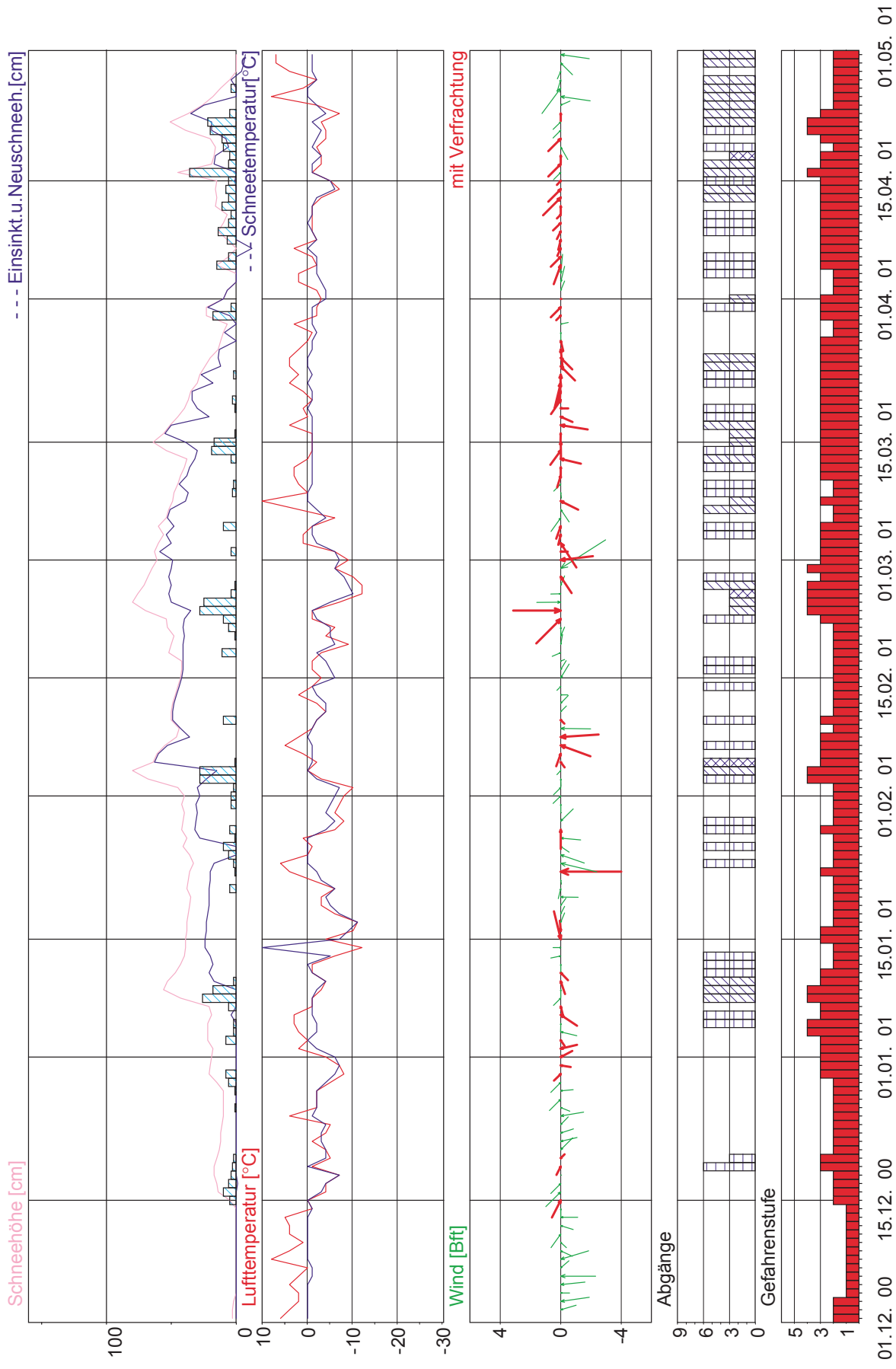
4. Wetter- und Schneedeckenentwicklung an den Beobachterstationen im Winter 2000/2001

19 Steeg
Dez 2000 - April 2001



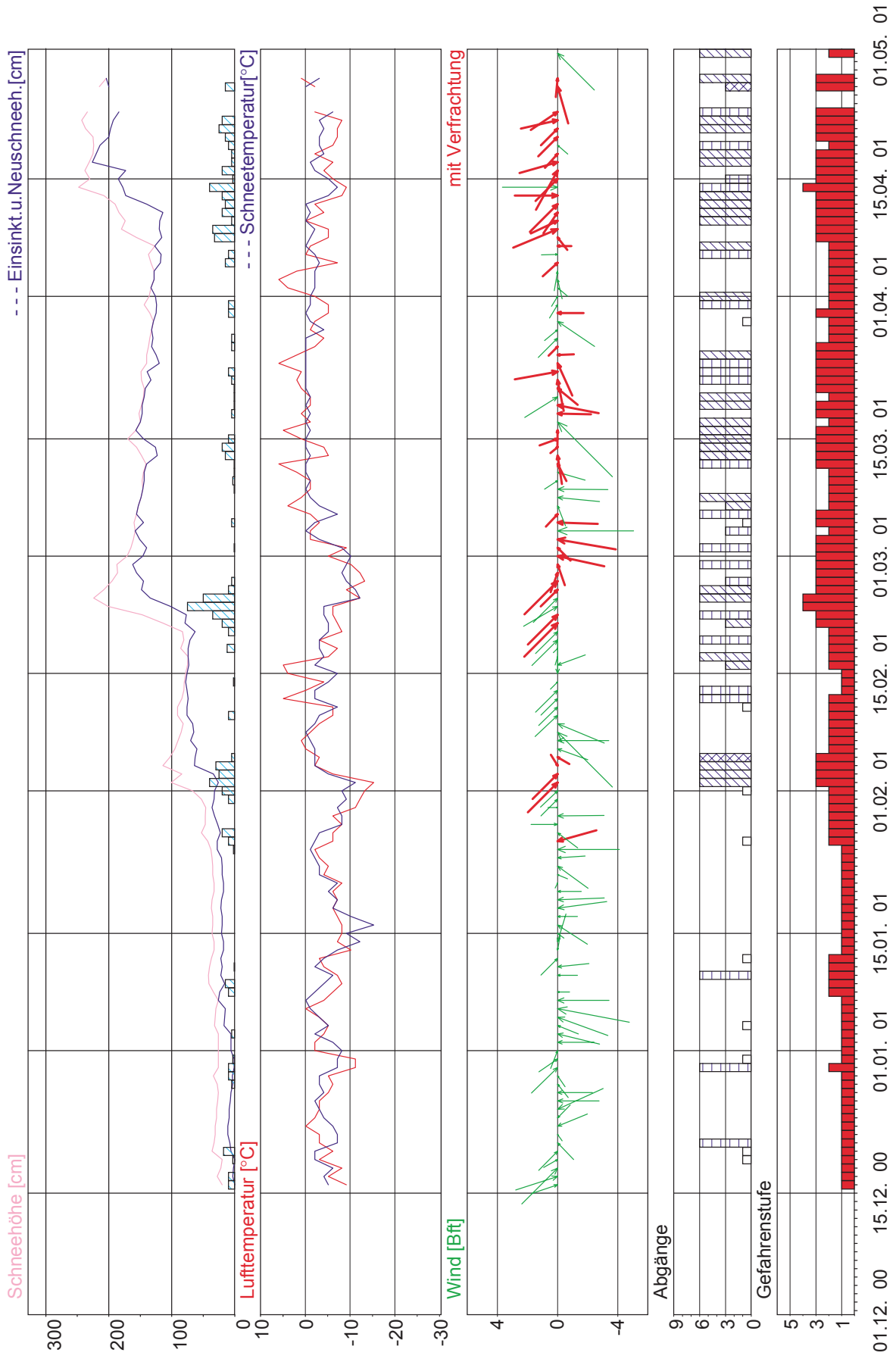
1 Boden Lechtal

Dez 2000 - April 2001



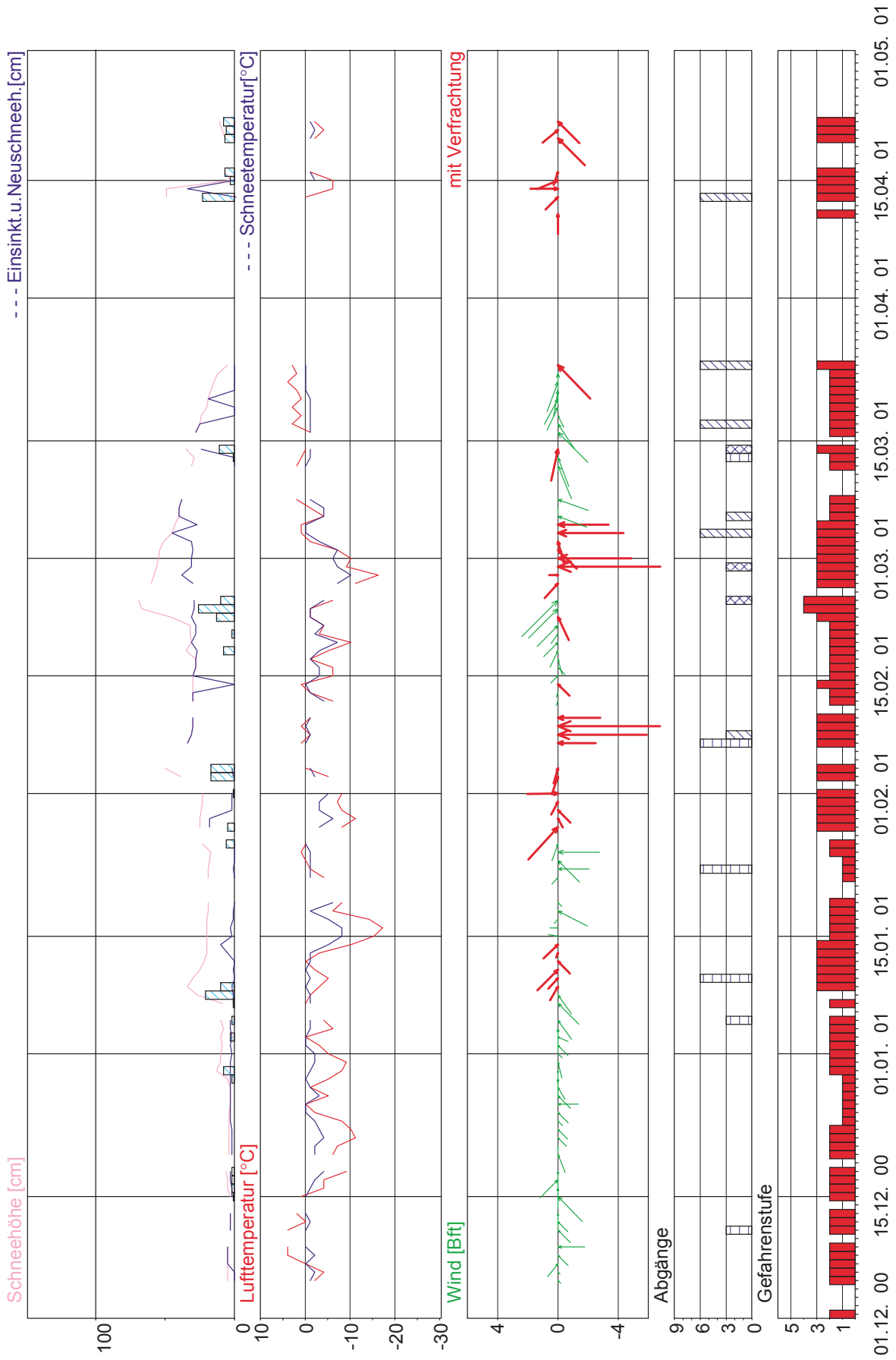
2 Nordkette

Dez 2000 - April 2001



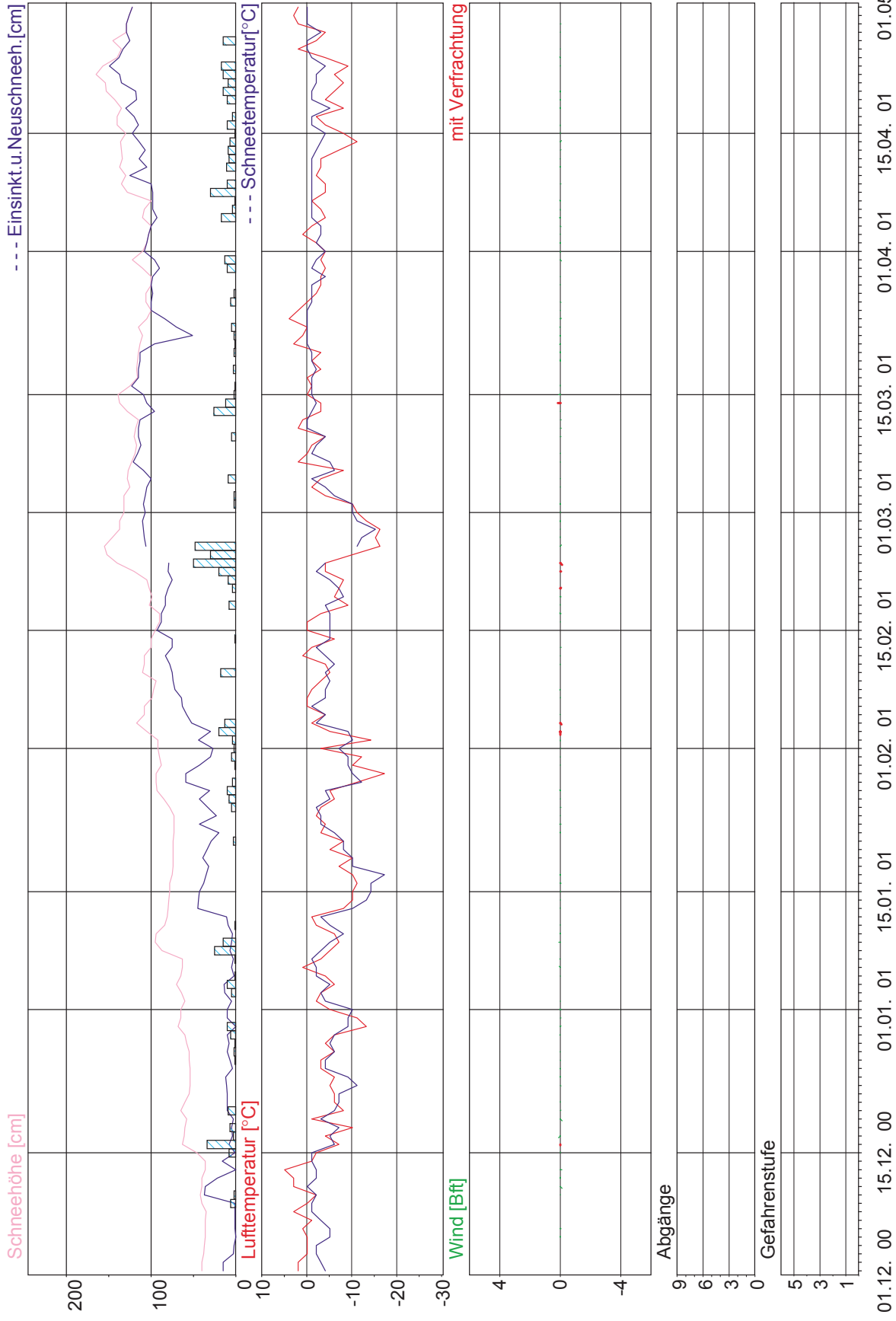
24 Kaunertal-Feichten

Dez 2000 - April 2001



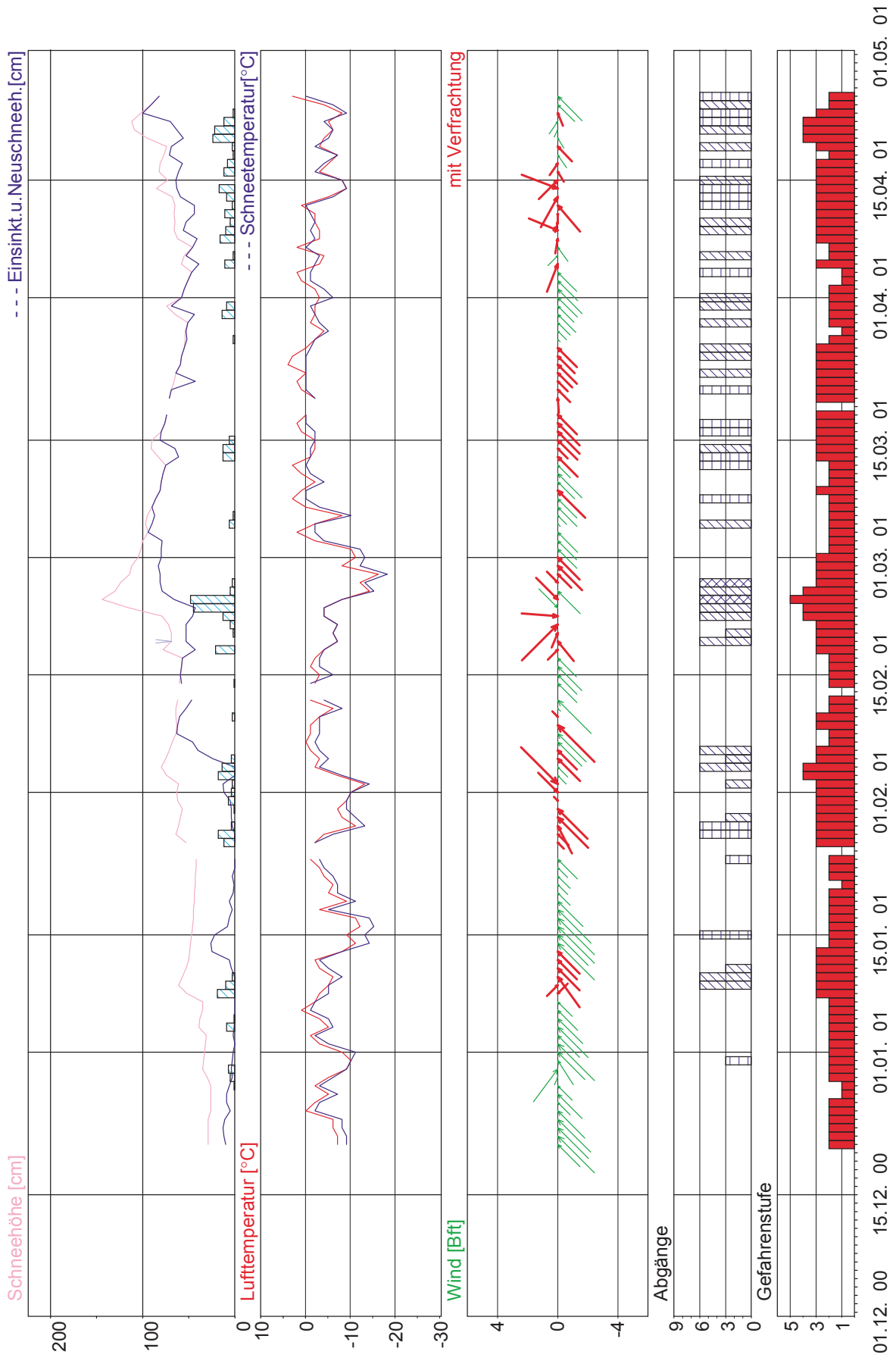
4 Kühltai

Dez 2000 - April 2001



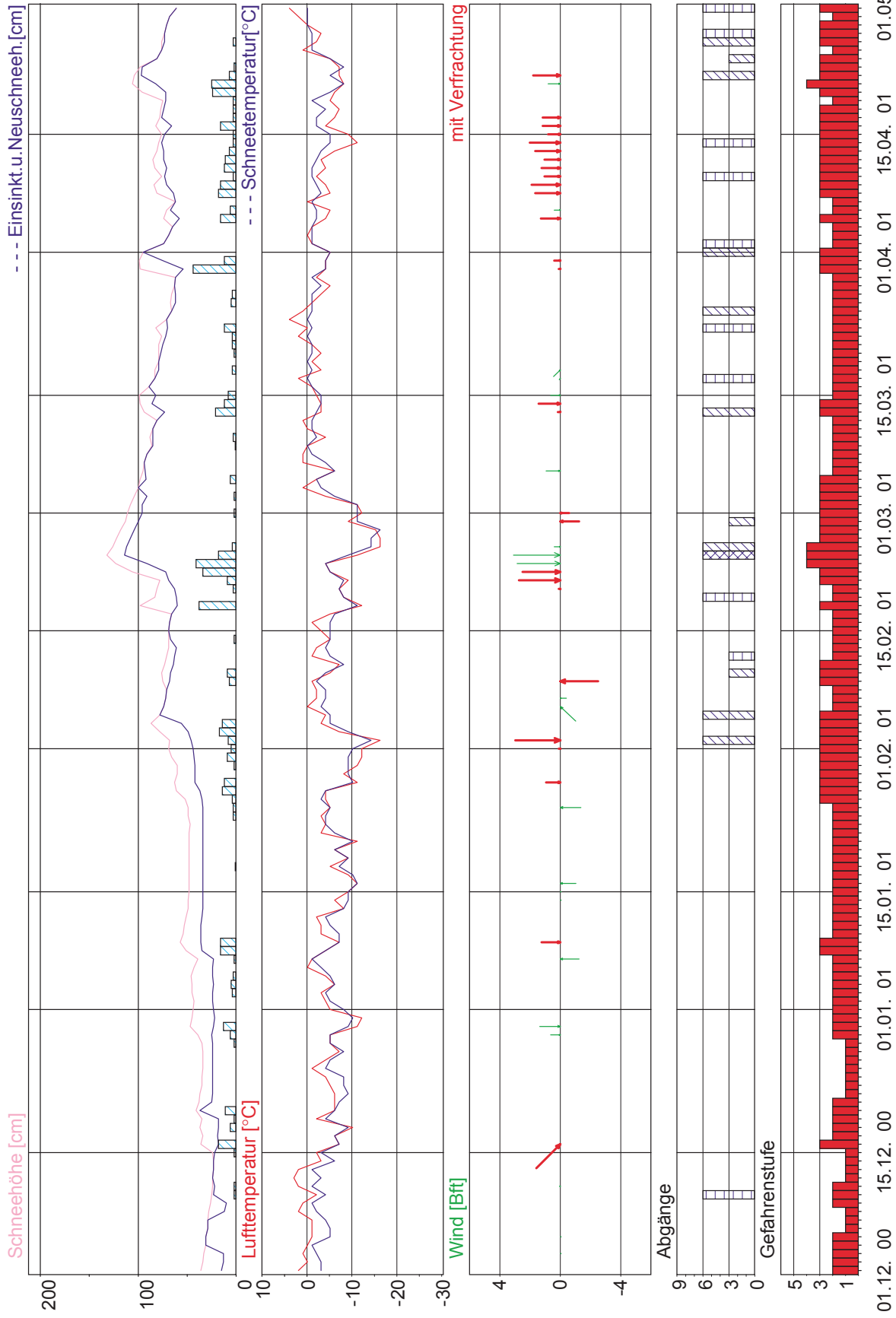
20 Schlick

Dez 2000 - April 2001



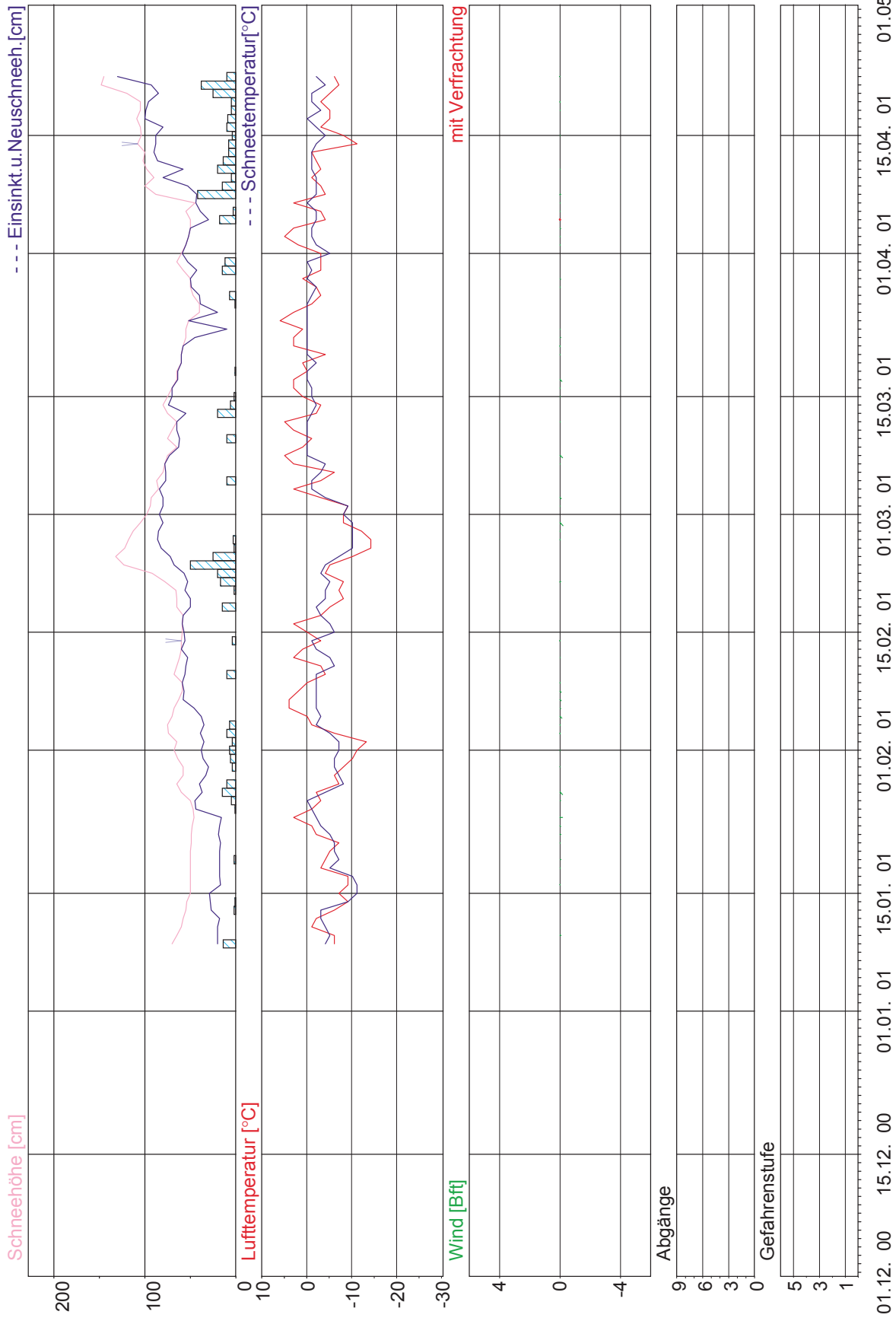
3 Oberburgl

Dez 2000 - April 2001



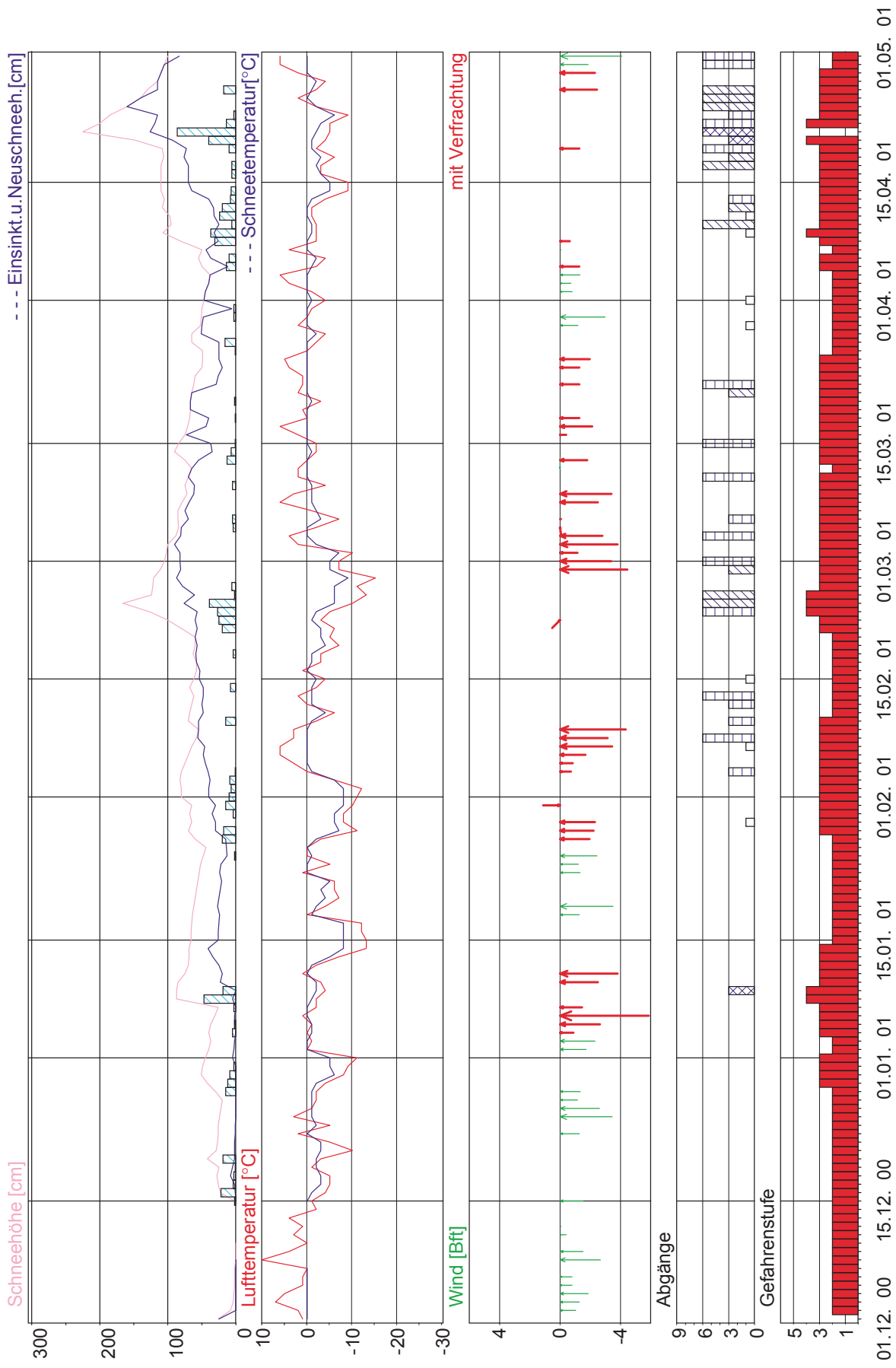
9 Penken

Dez 2000 - April 2001



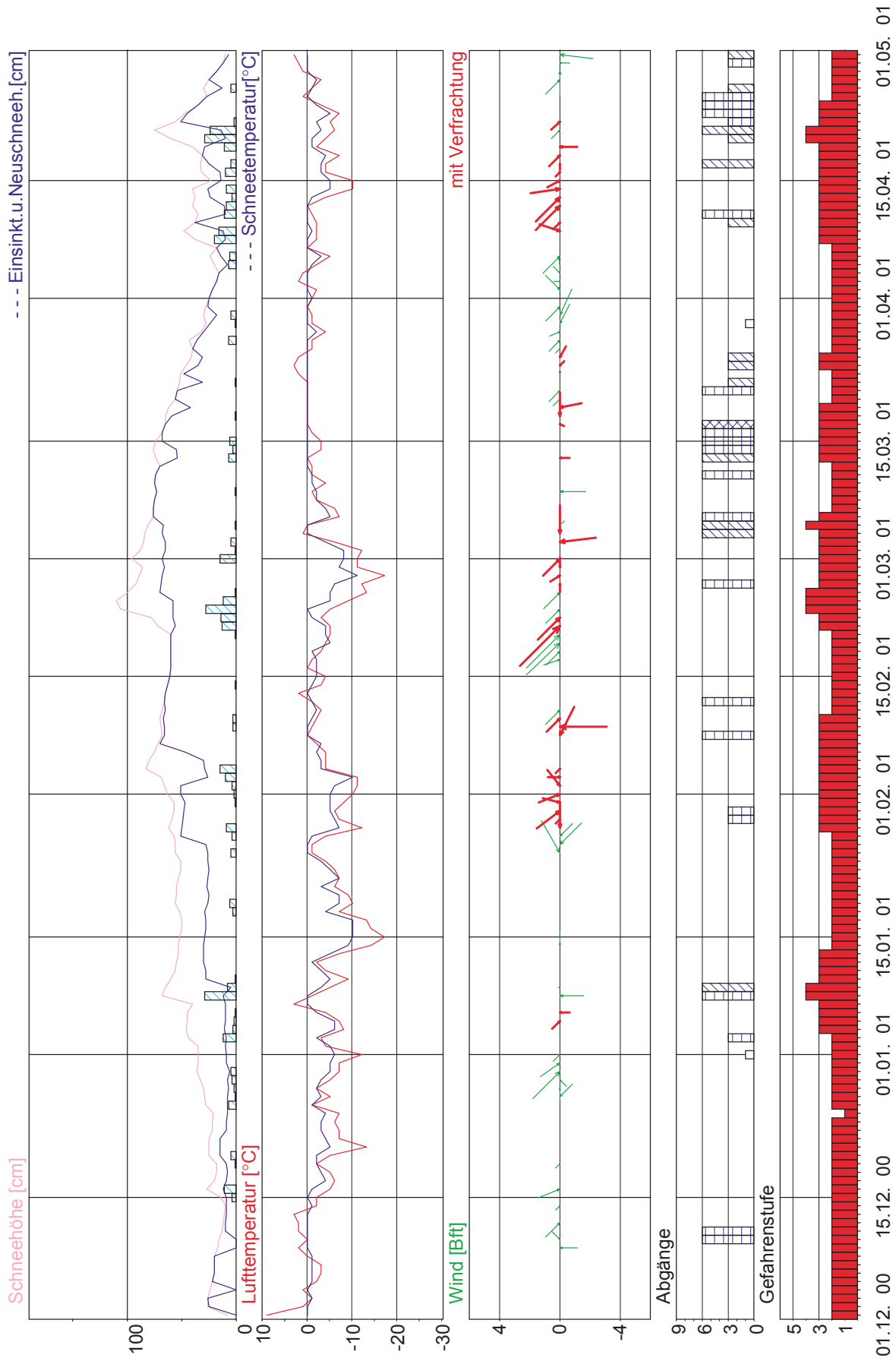
16 Felbertauern Nord

Dez 2000 - April 2001



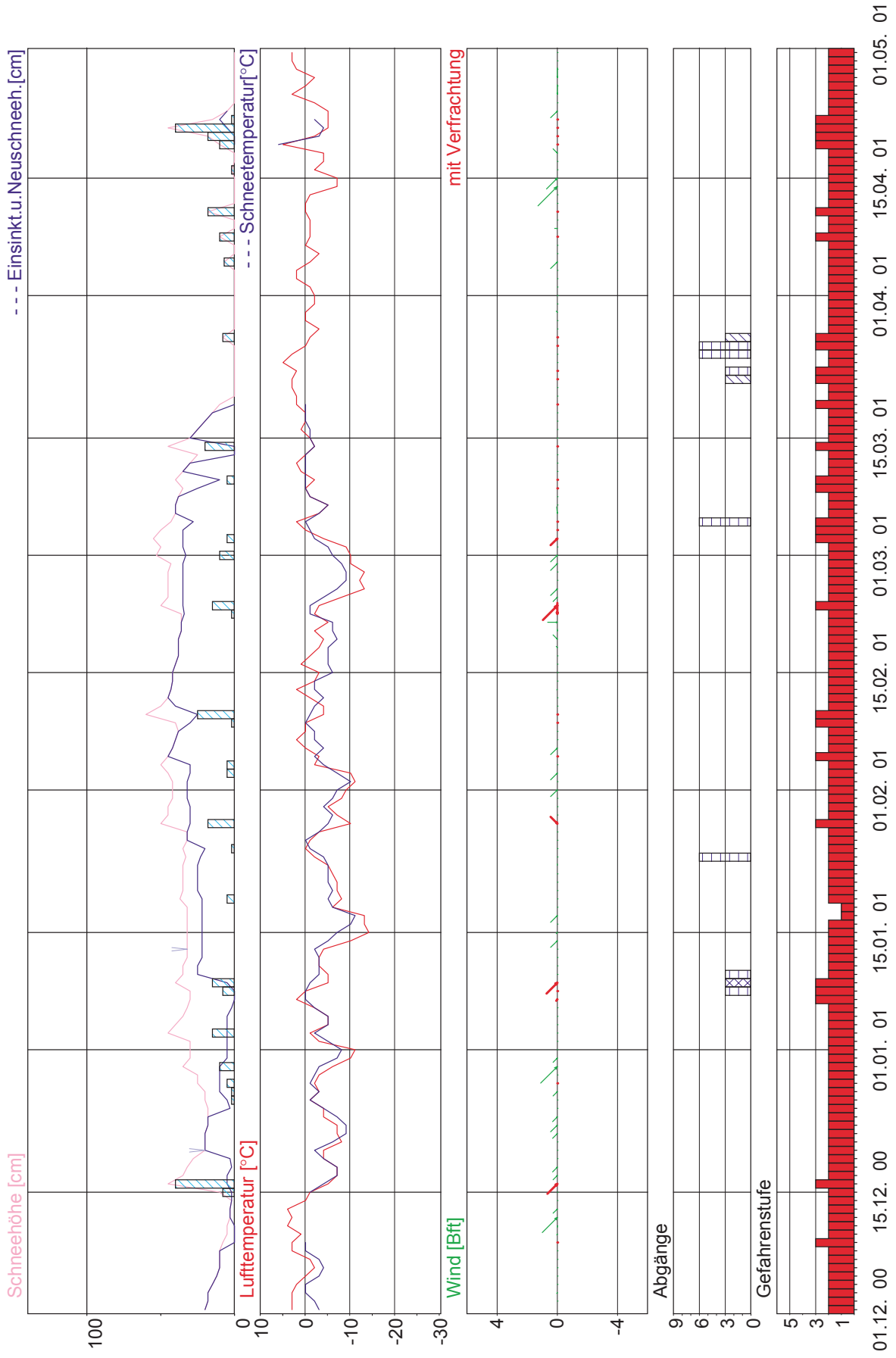
17 Felbertauern Süd

Dez 2000 - April 2001



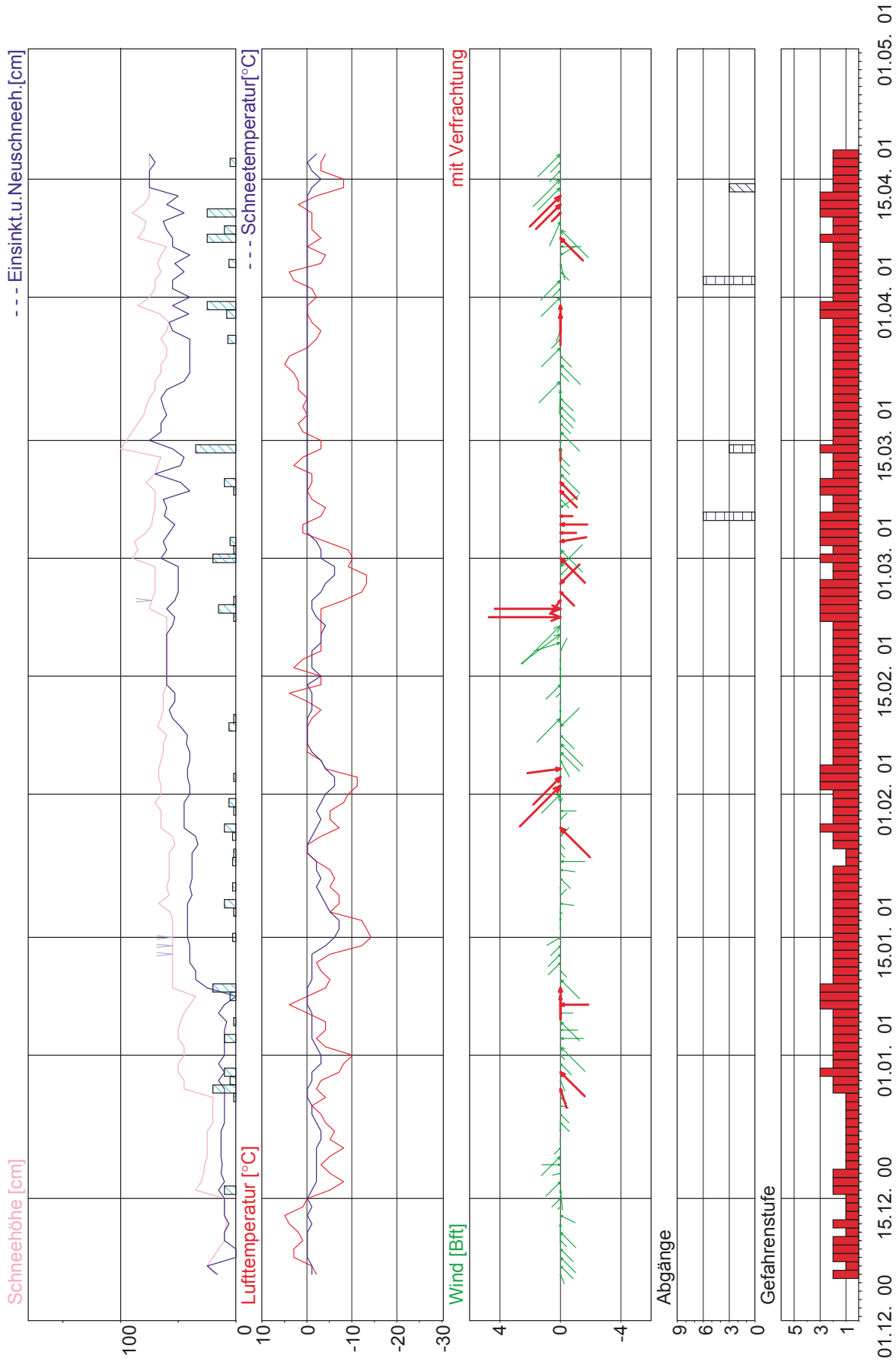
23 St. Veit i.D.

Dez 2000 - April 2001



22 Dolomitenhütte

Dez 2000 - April 2001



18 Obertilliach

Dez 2000 - April 2001

