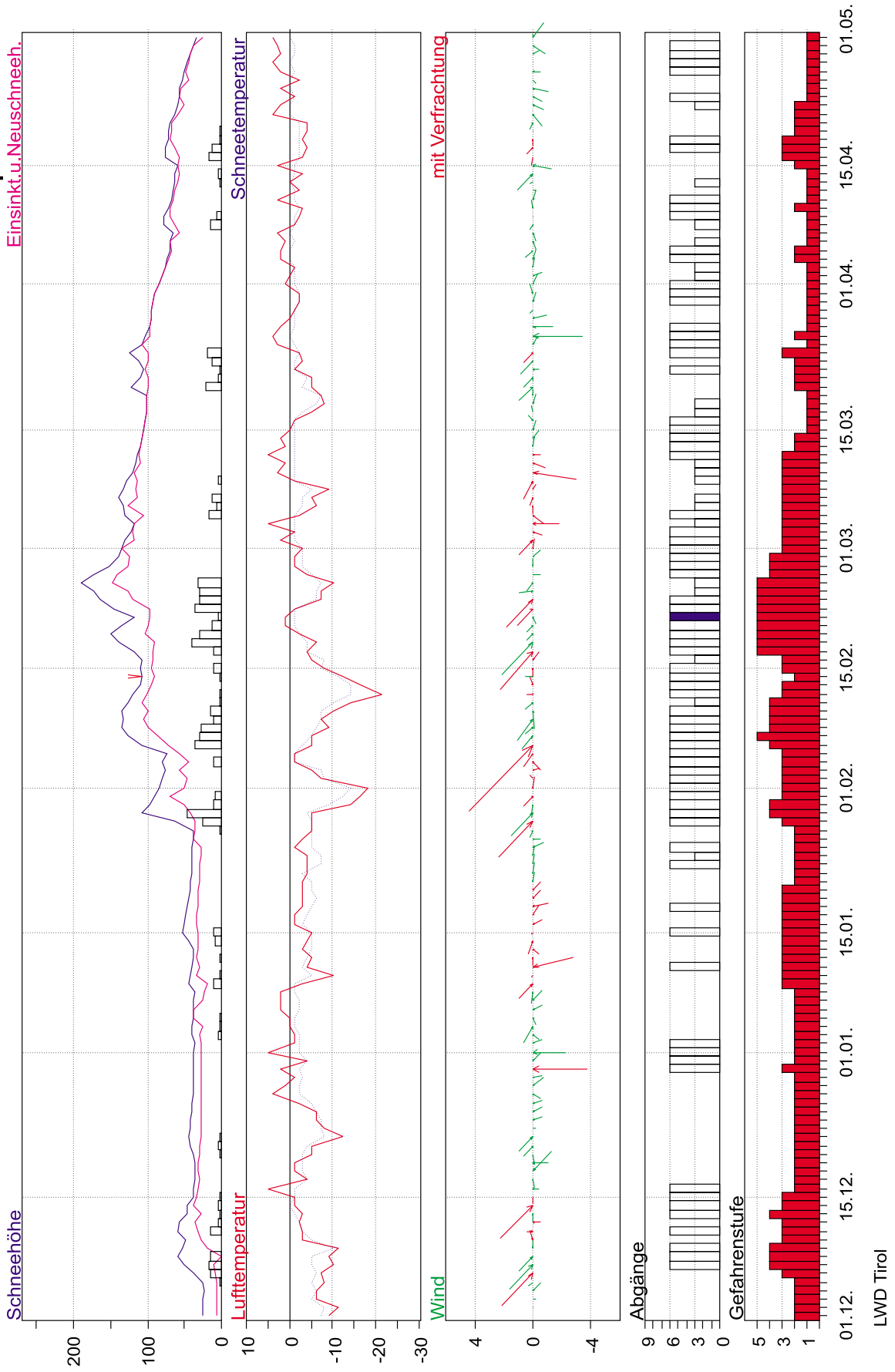


6. Schneedeckenentwicklung 1998/99

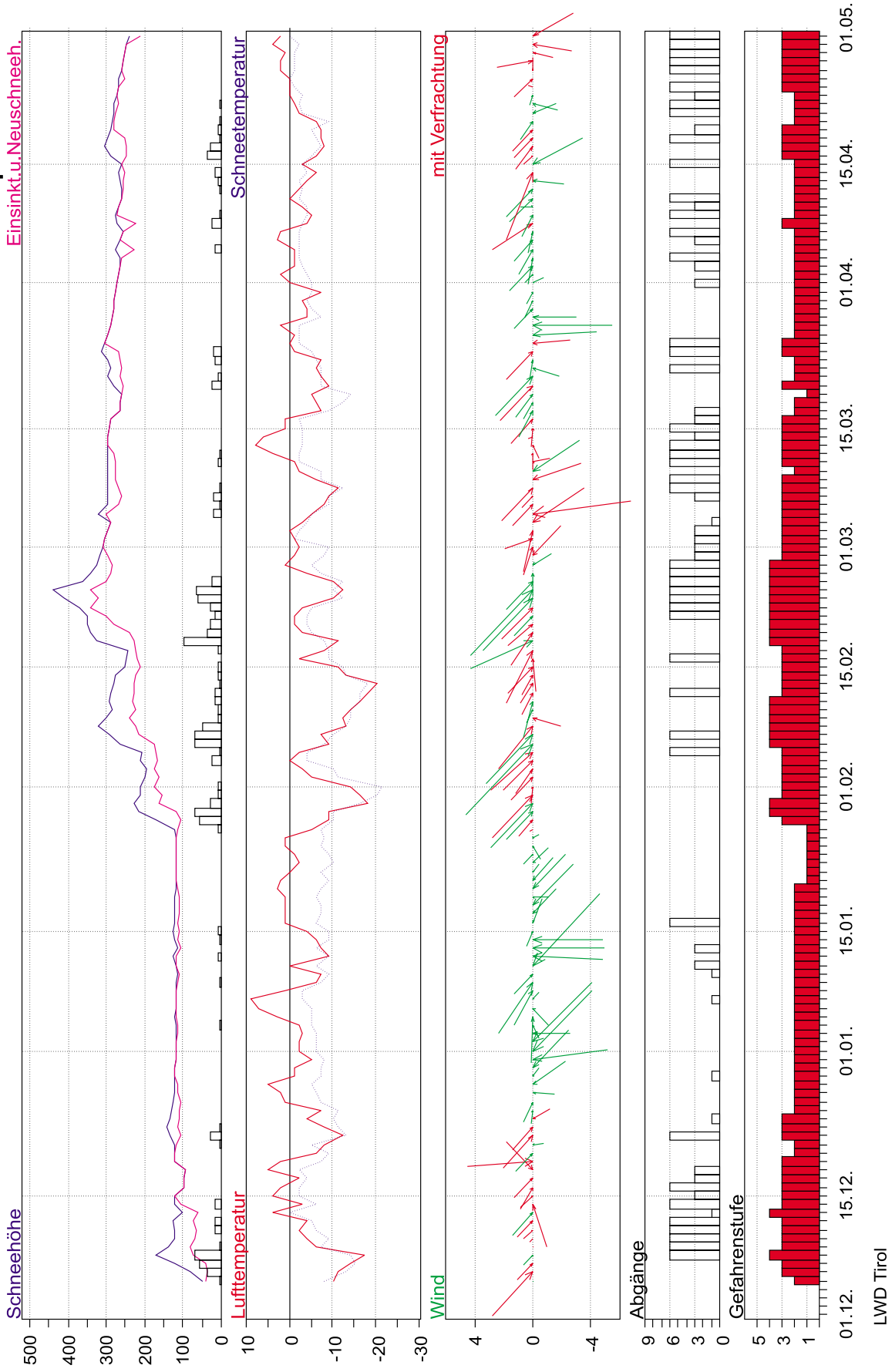
1 Boden Lechtal

Dez 1998 - April 1999



2 Nordkette

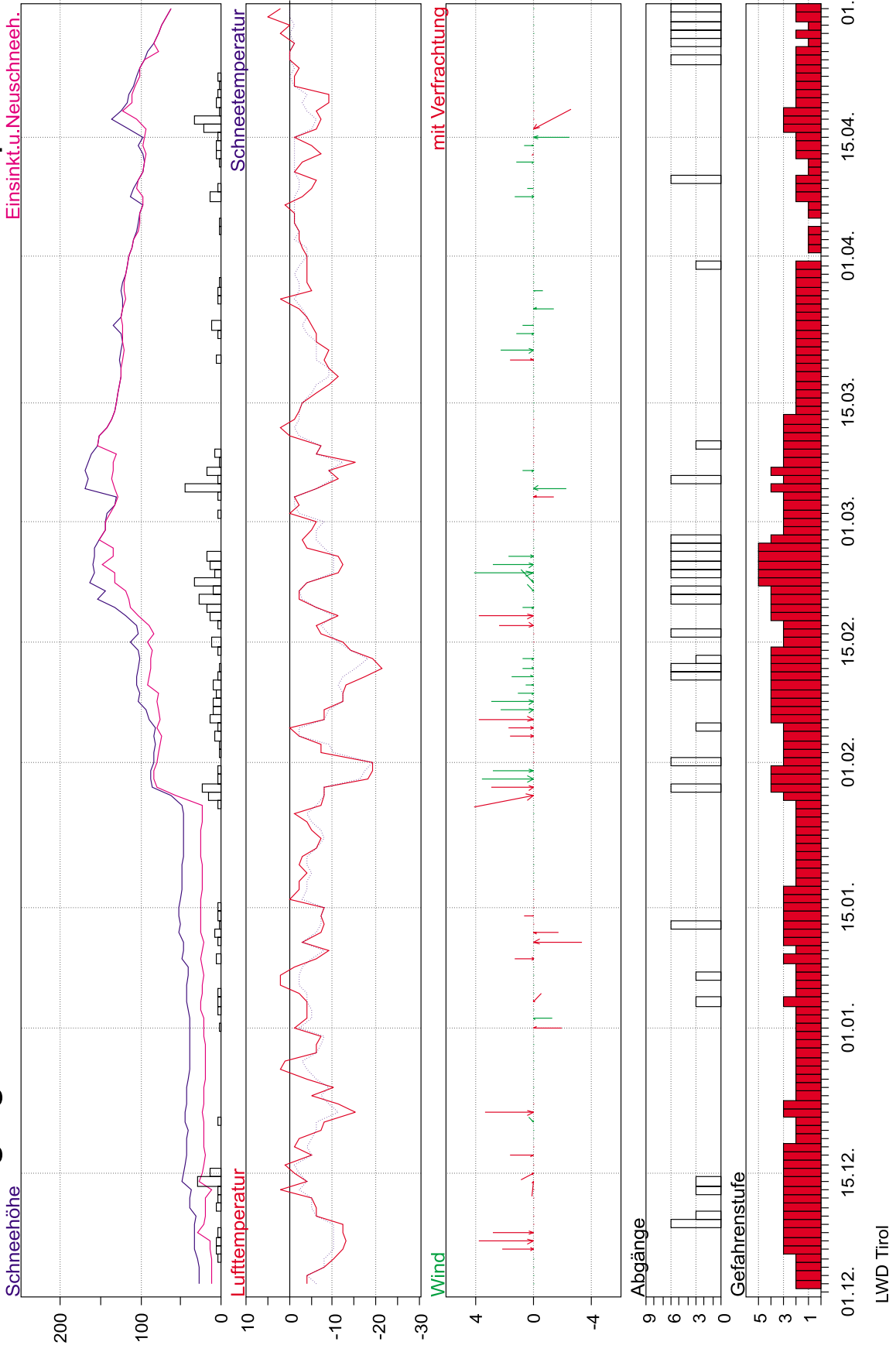
Dez 1998 - April 1999



3 Obergurgl

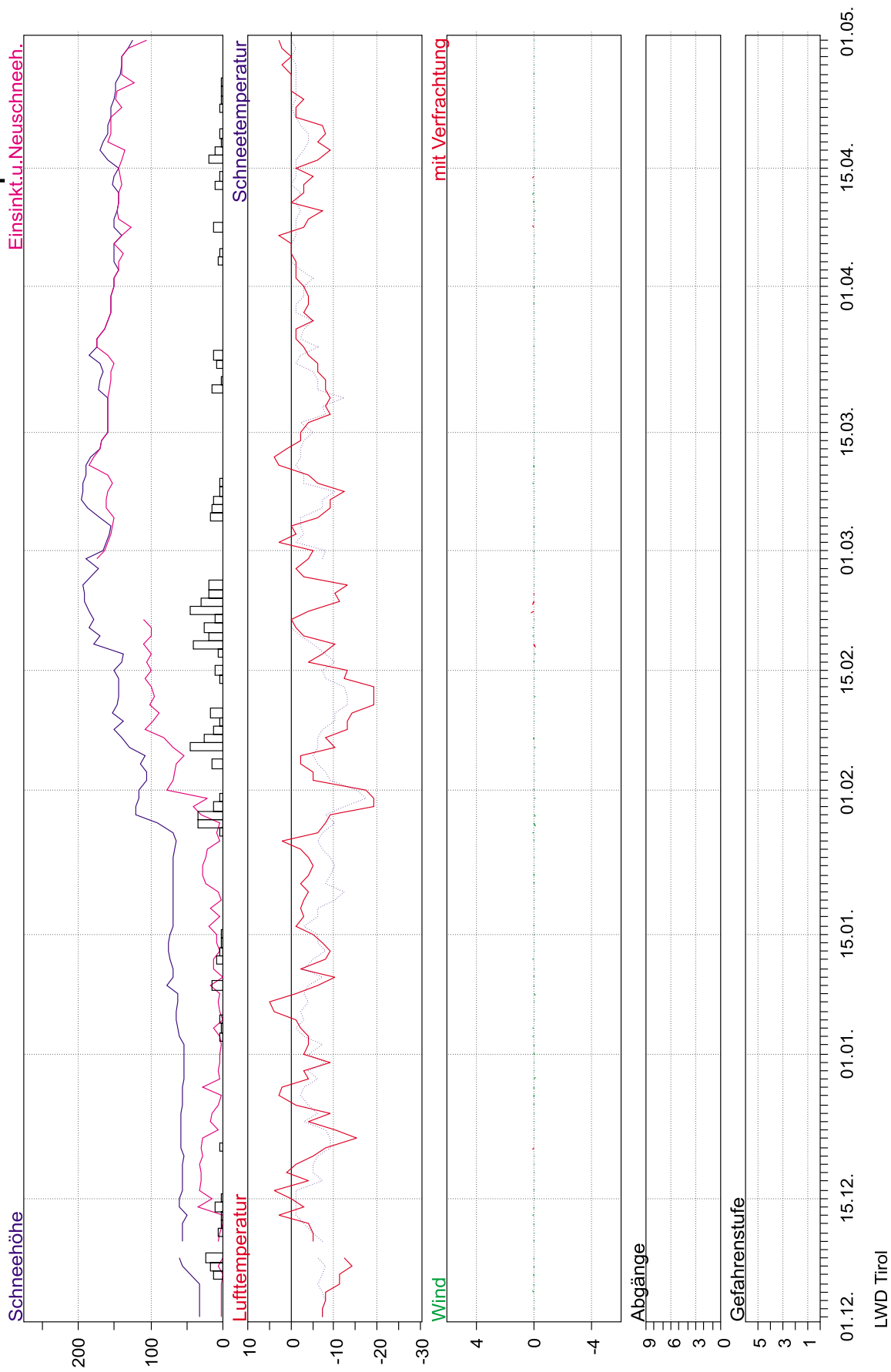
Dez 1998 - April 1999

Einsinkt u. Neuschnee.



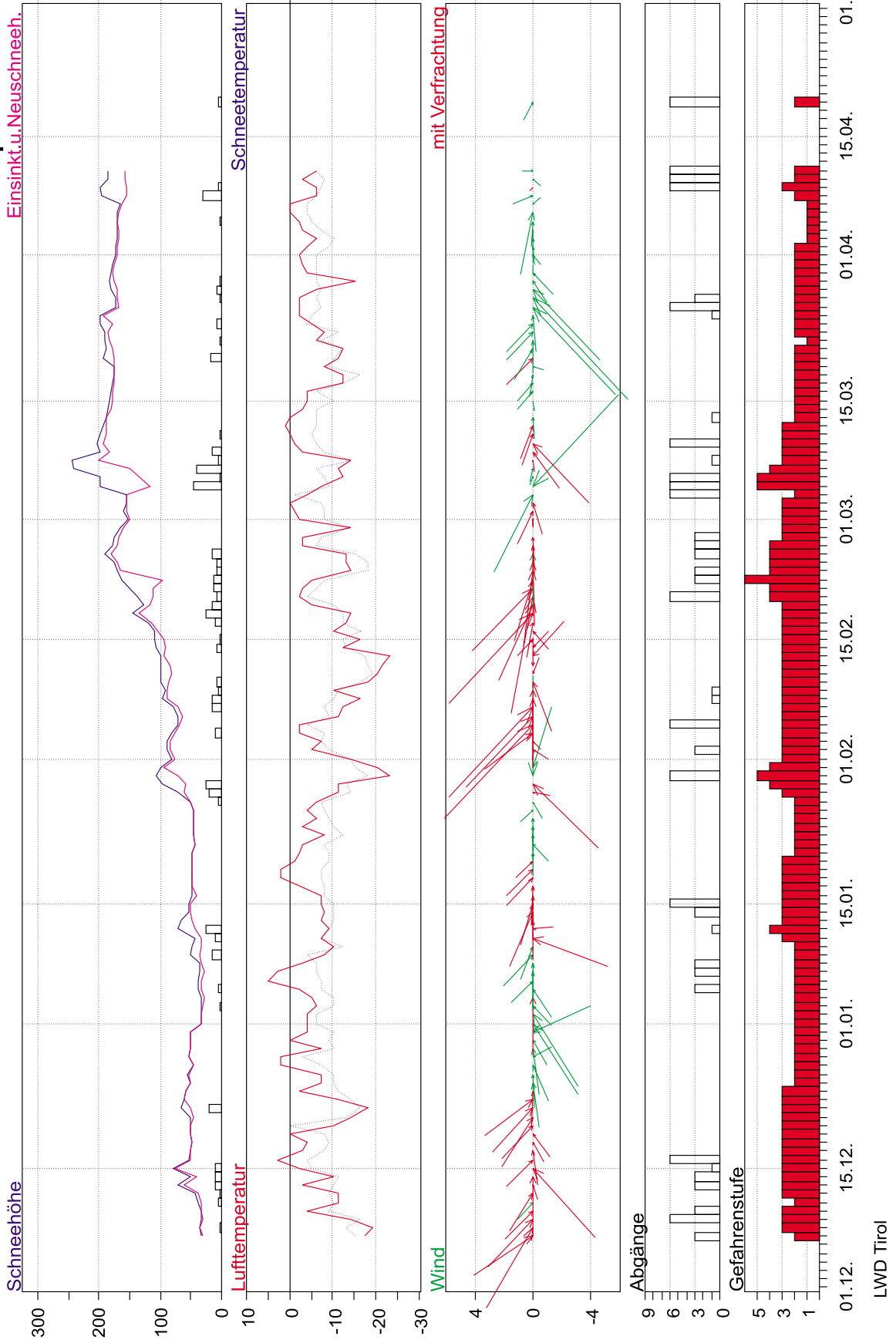
4 Kühtai

Dez 1998 - April 1999



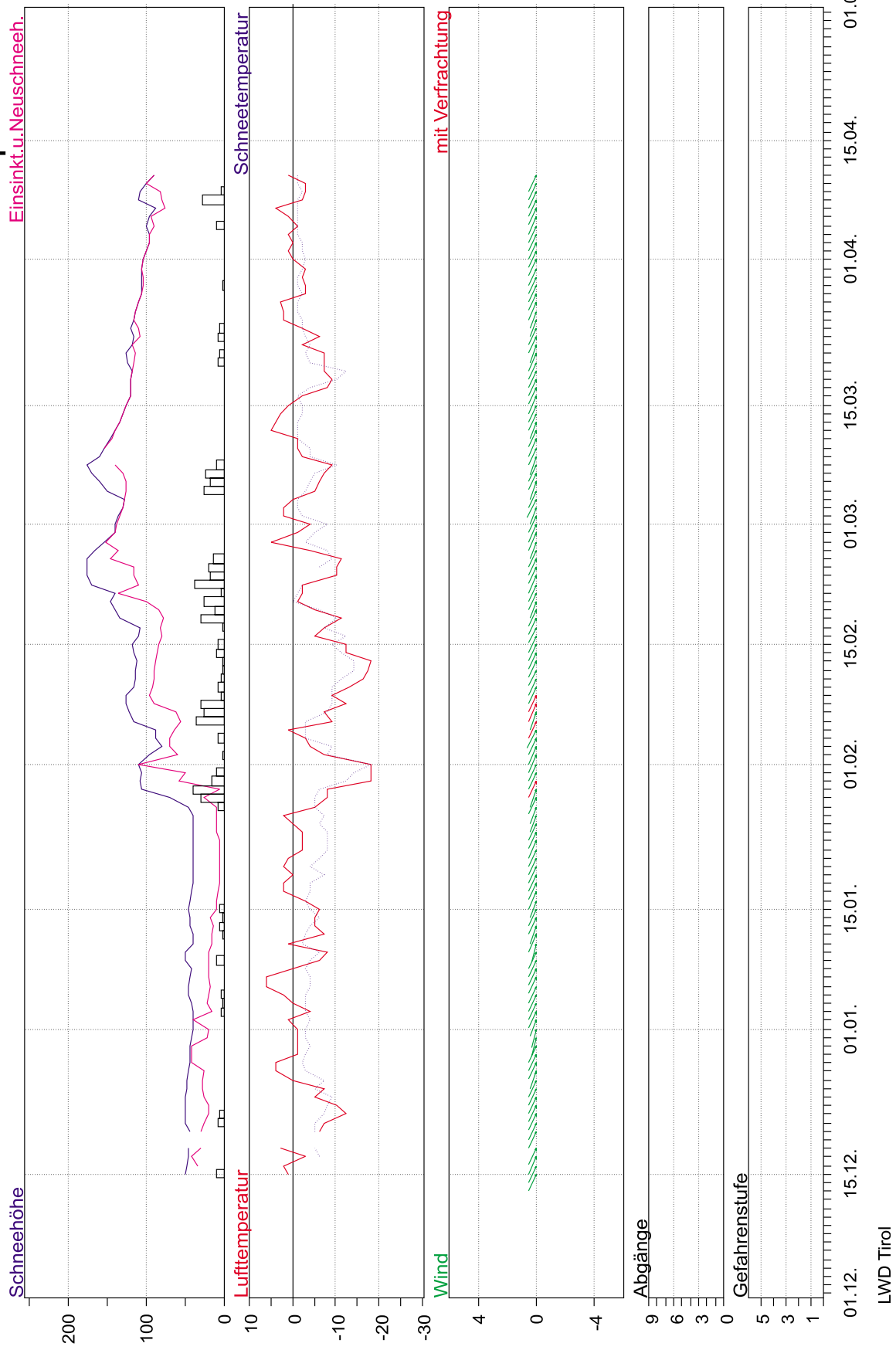
6 Stubaier Gletscher

Dez 1998 - April 1999



9 Penken

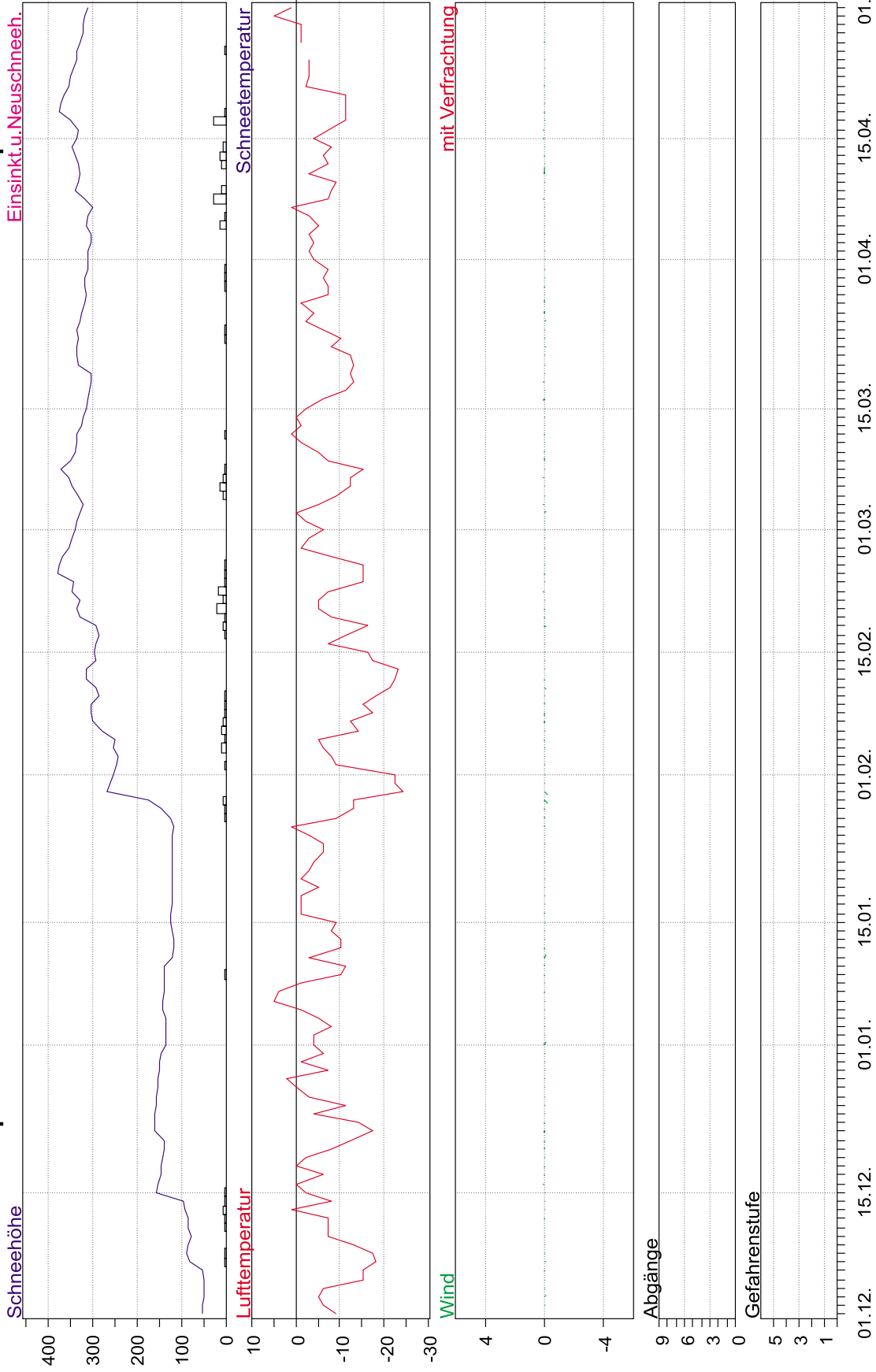
Dez 1998 - April 1999



10 Plattkopf

Dez 1998 - April 1999

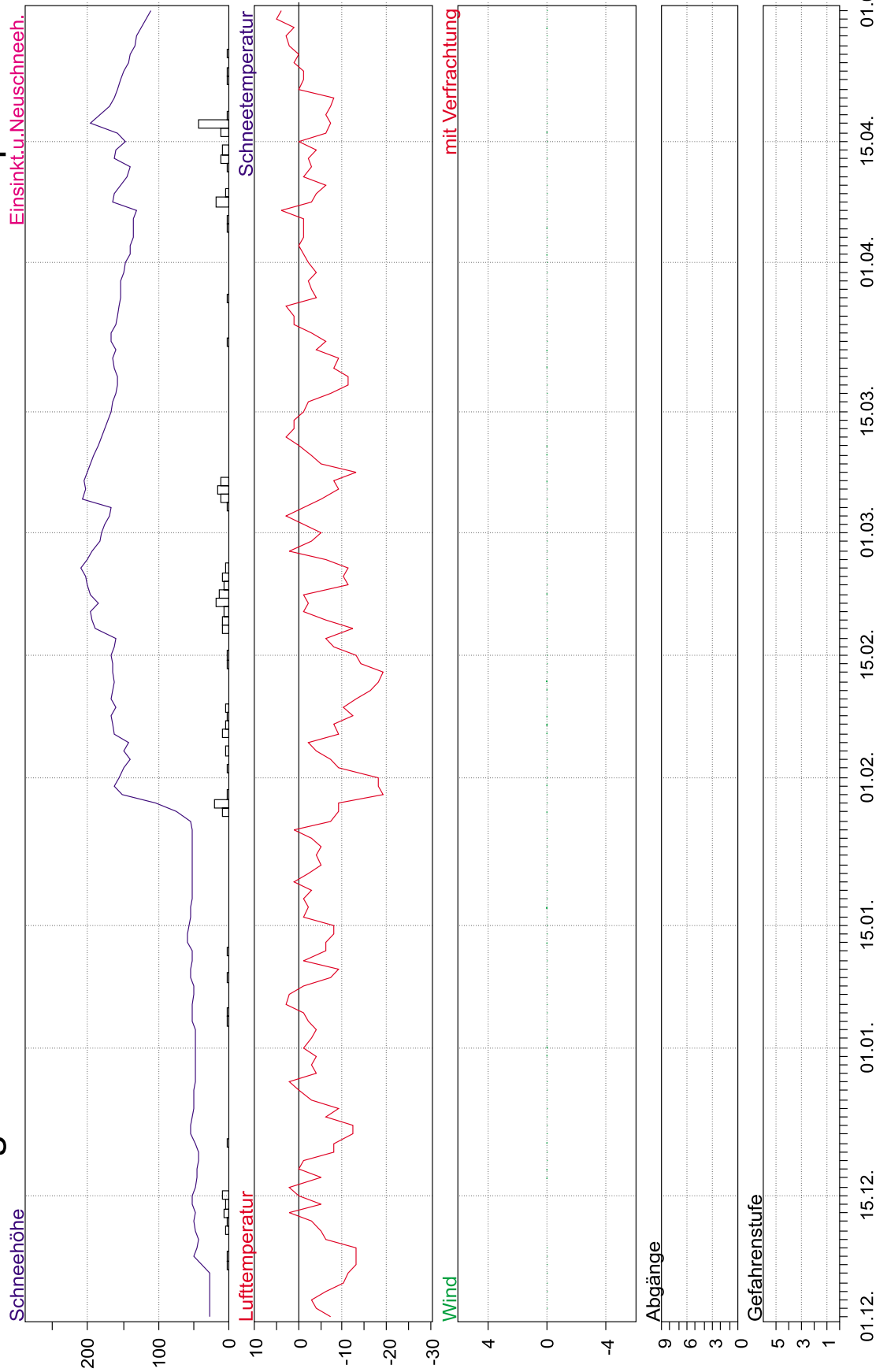
Einsinkt u. Neuschnee.



LWD Tirol

11 Schlegeis

Dez 1998 - April 1999

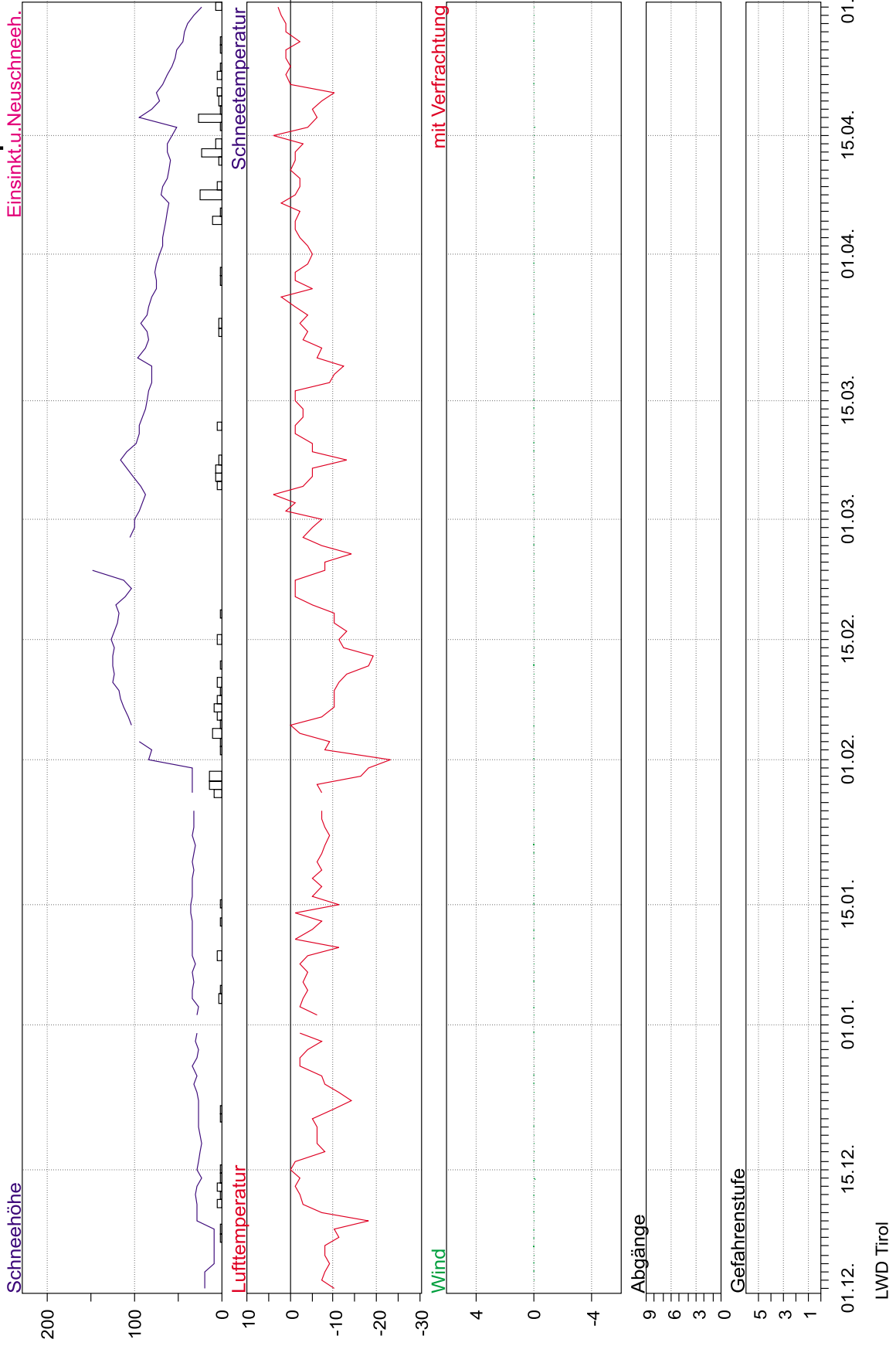


LWD Tirol

12 Durlaß Boden

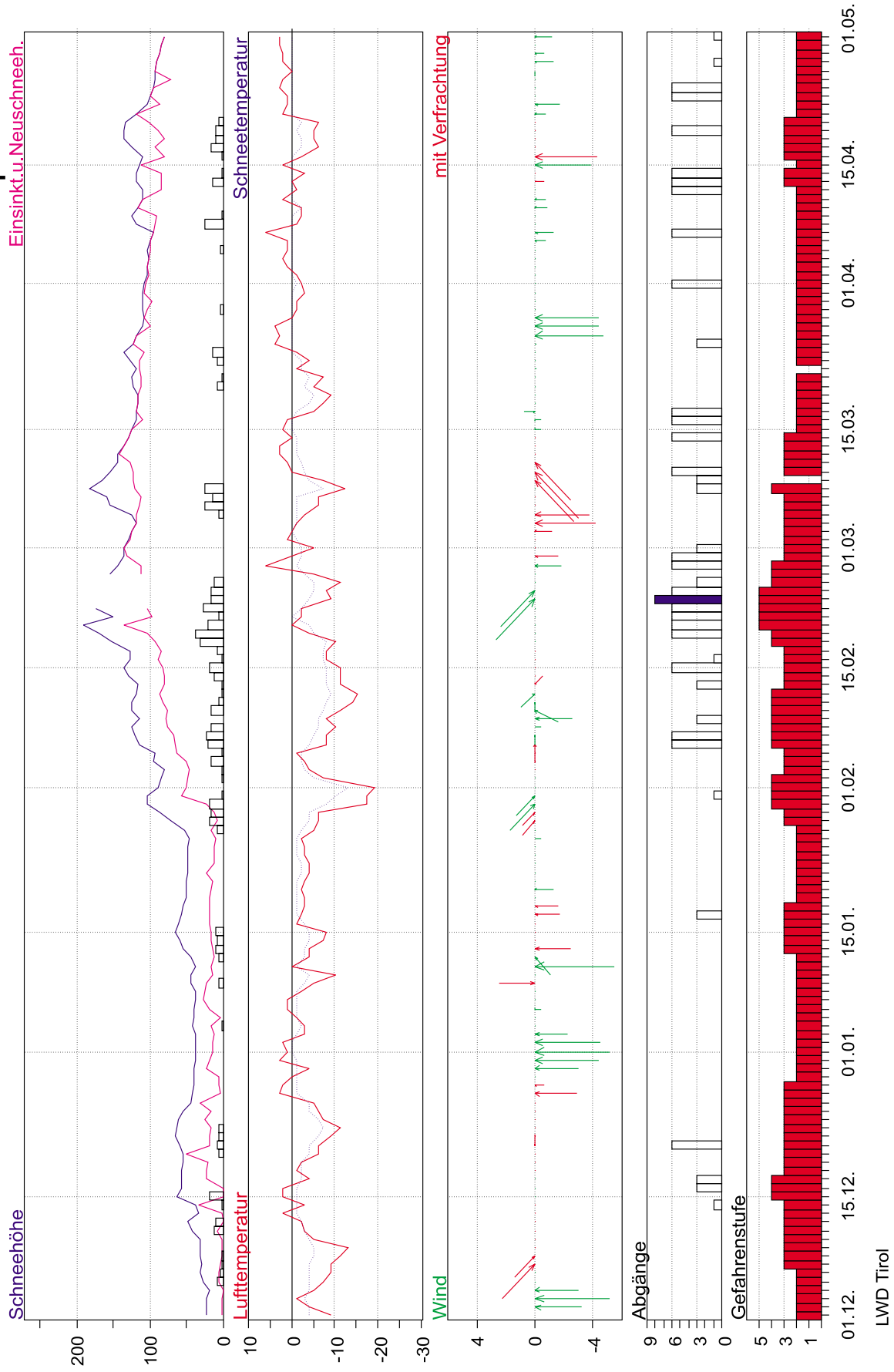
Dez 1998 - April 1999

Einsinkt.u.Neuschneeh.



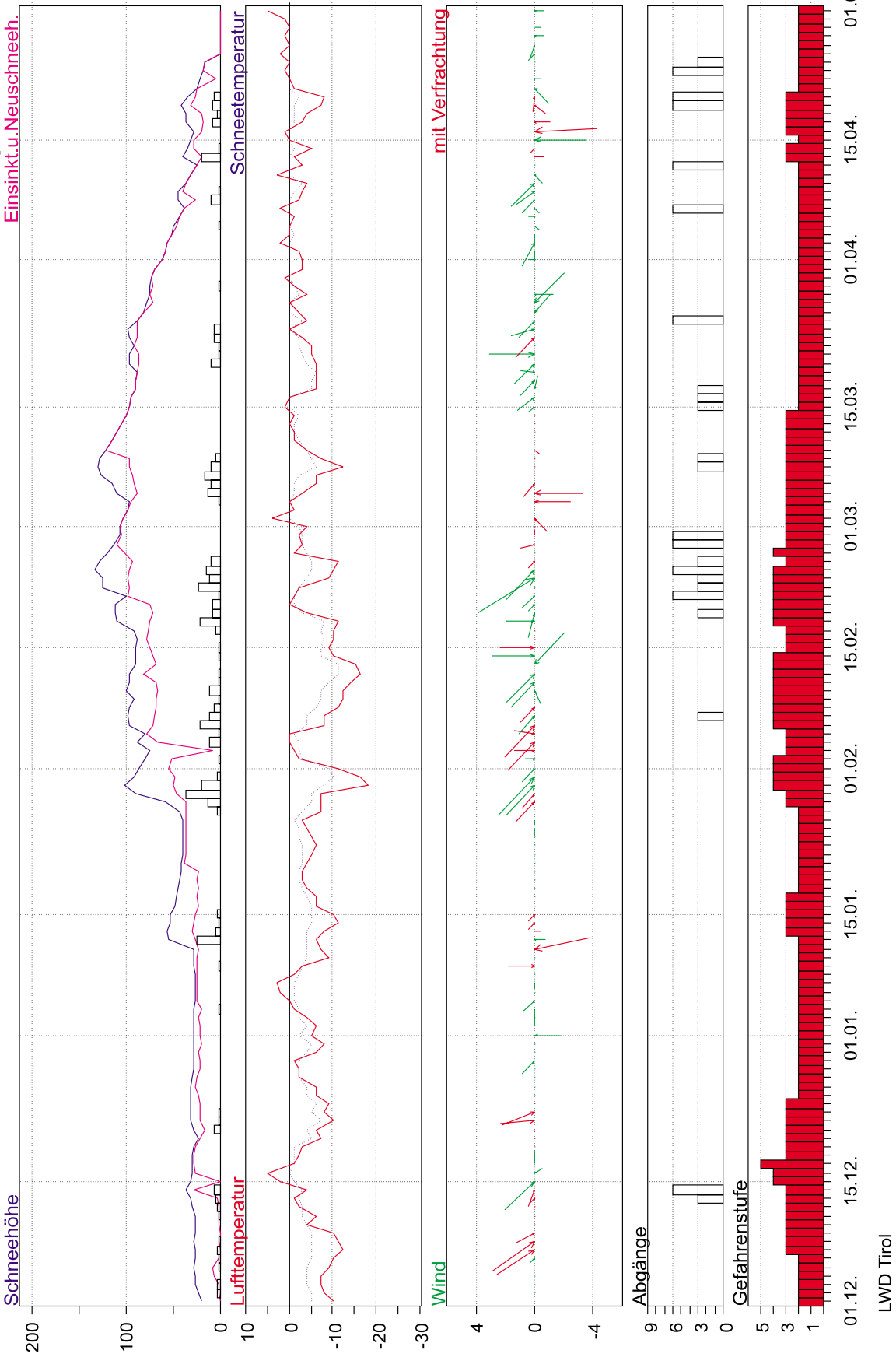
16 Felbertauern Nord

Dez 1998 - April 1999



17 Felbertauern Süd

Dez 1998 - April 1999

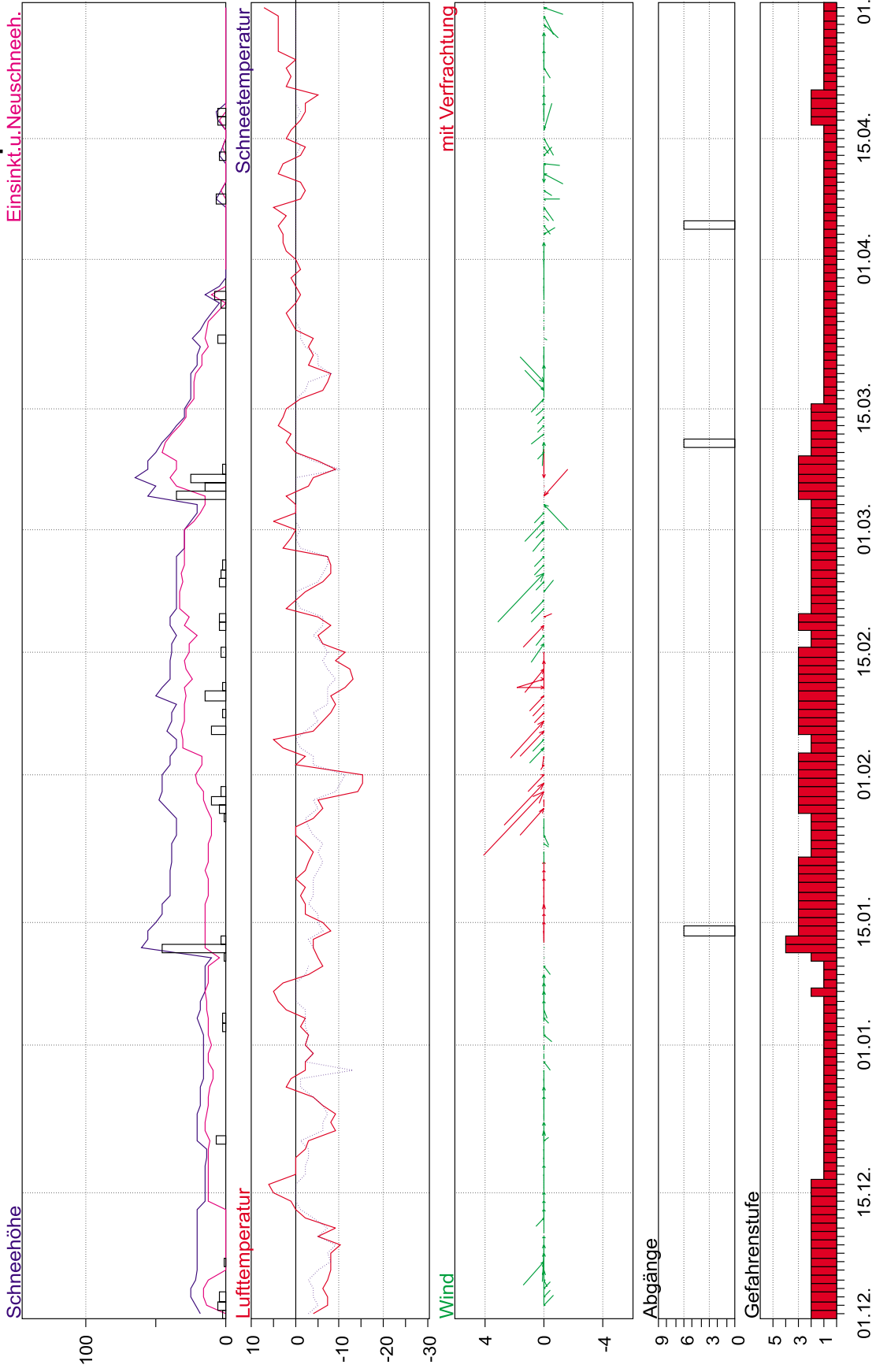


LWD Tirol

18 Obertilliach

Dez 1998 - April 1999

Einsinkt.u. Neuschneeh.

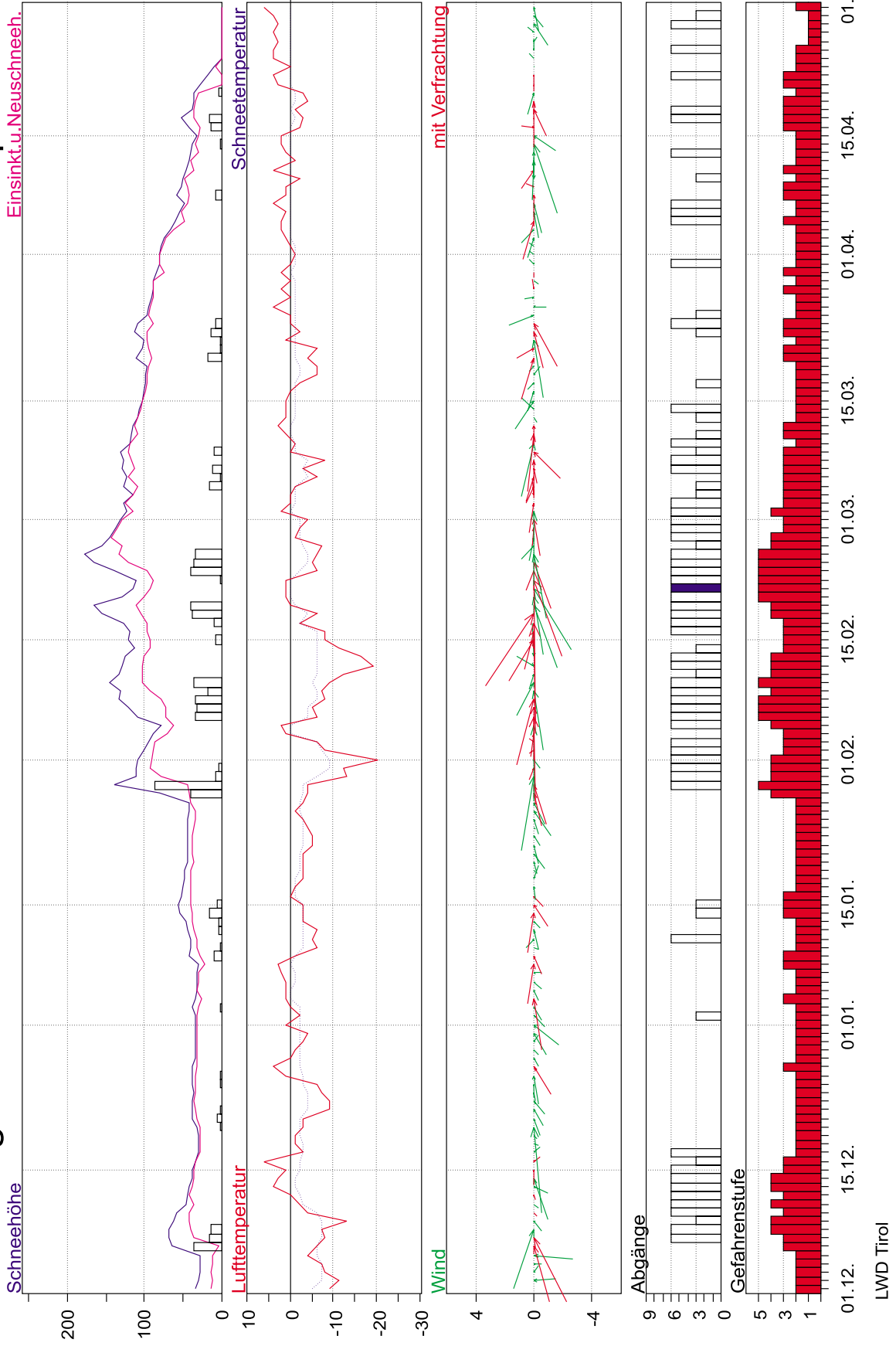


LWD Tirol

19 Steeg

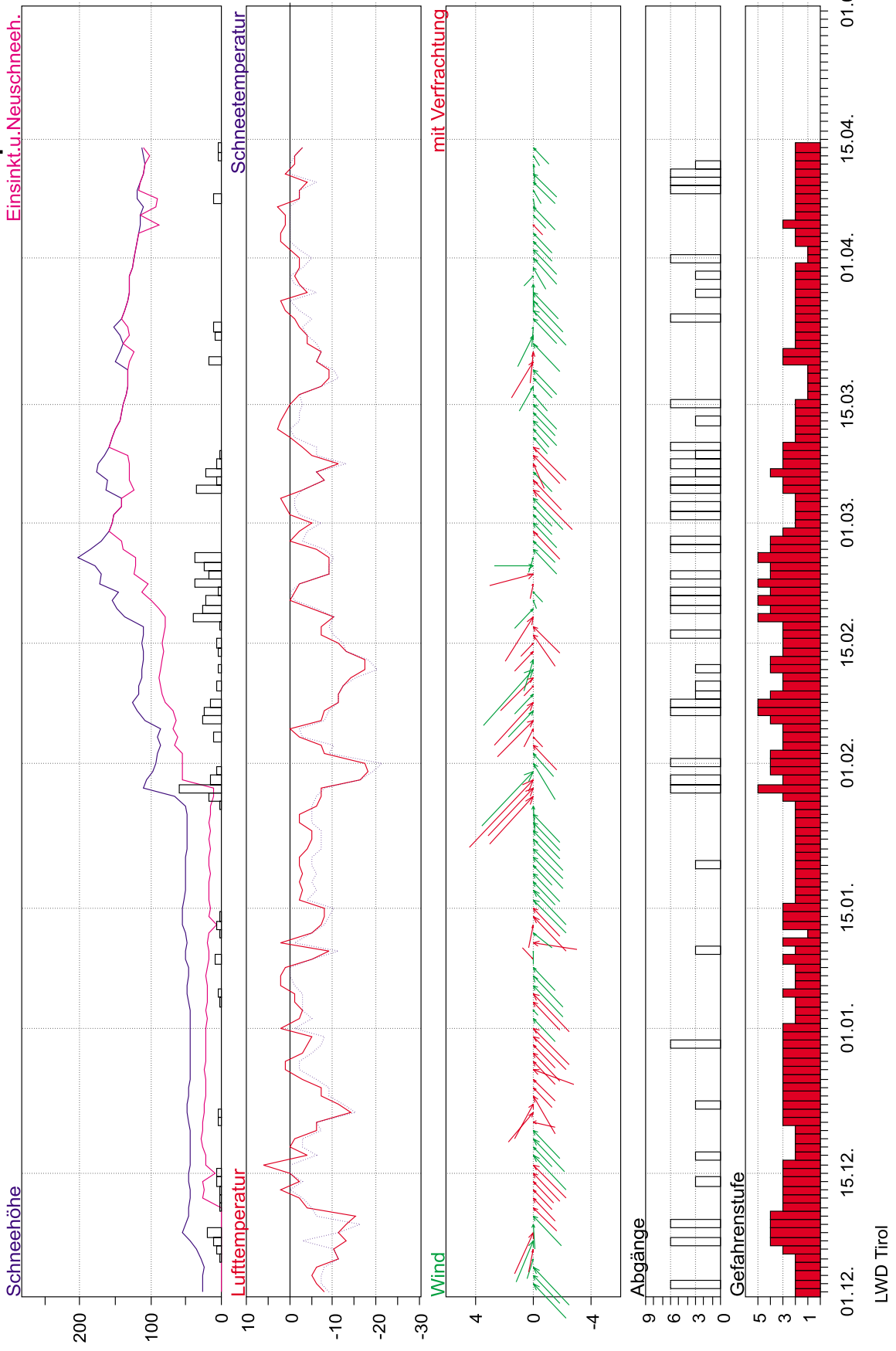
Dez 1998 - April 1999

Einsinkt u. Neuschnee.



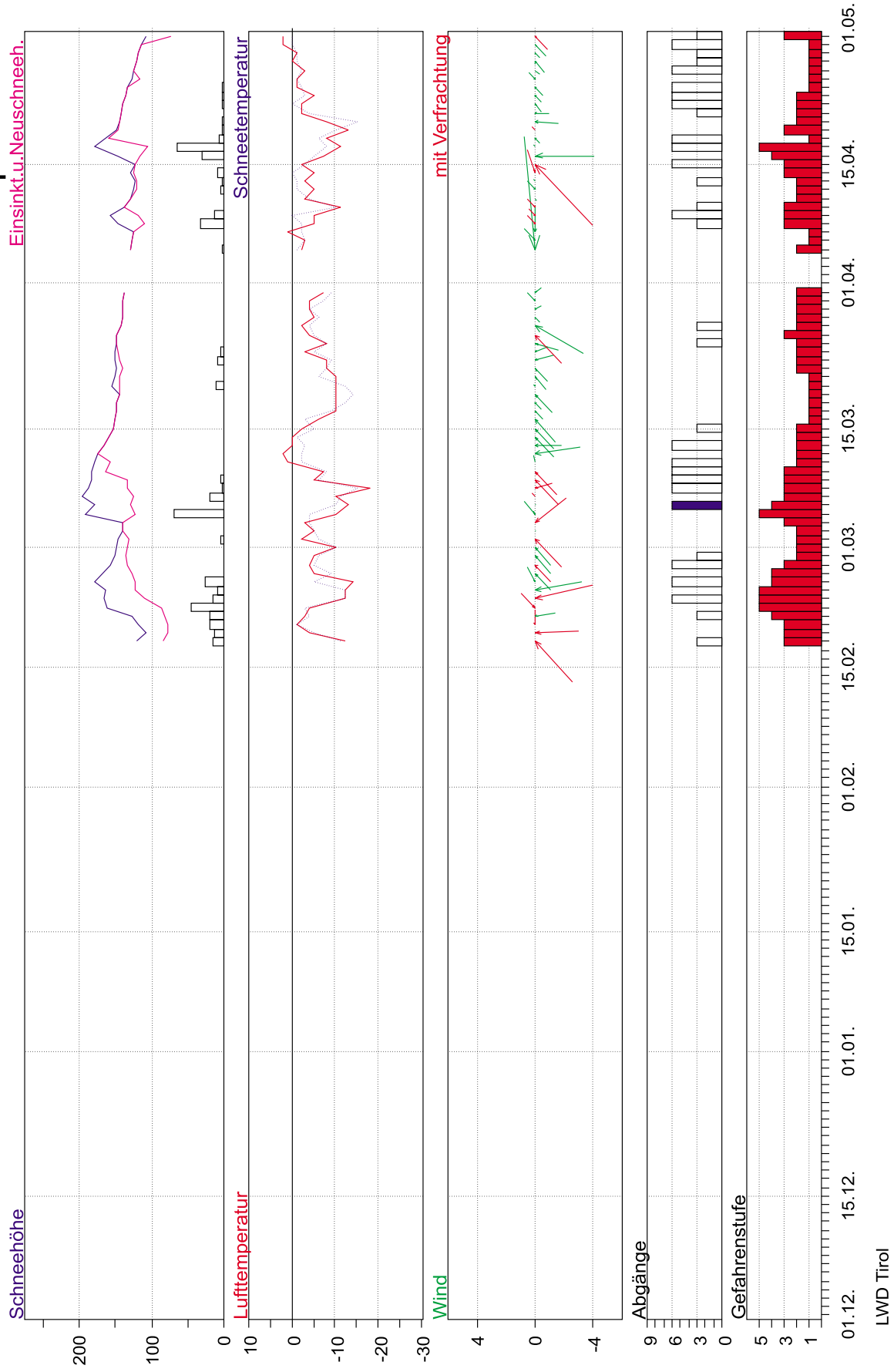
20 Schlick

Dez 1998 - April 1999



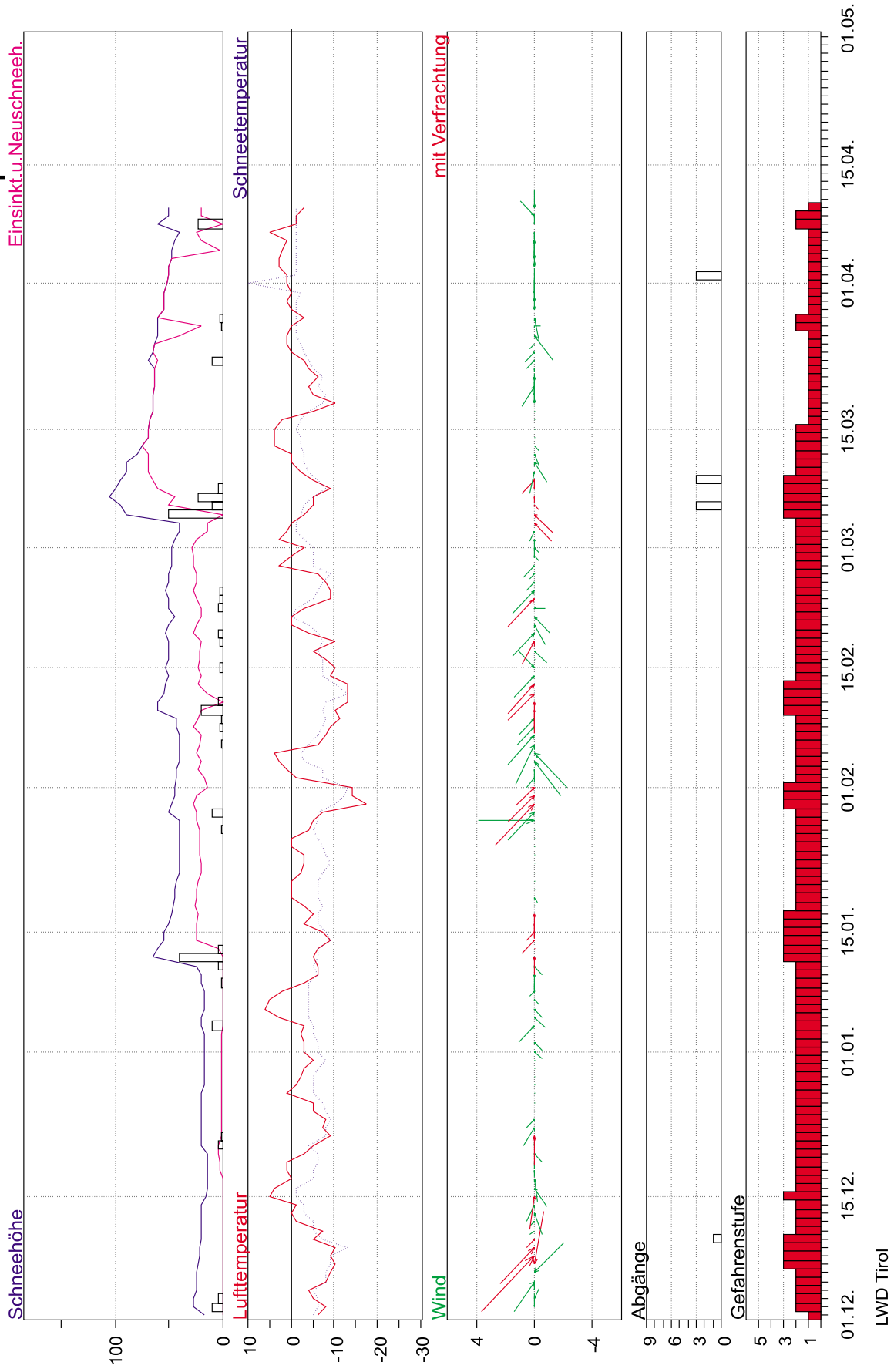
21 Franz-Senn-Hütte

Dez 1998 - April 1999



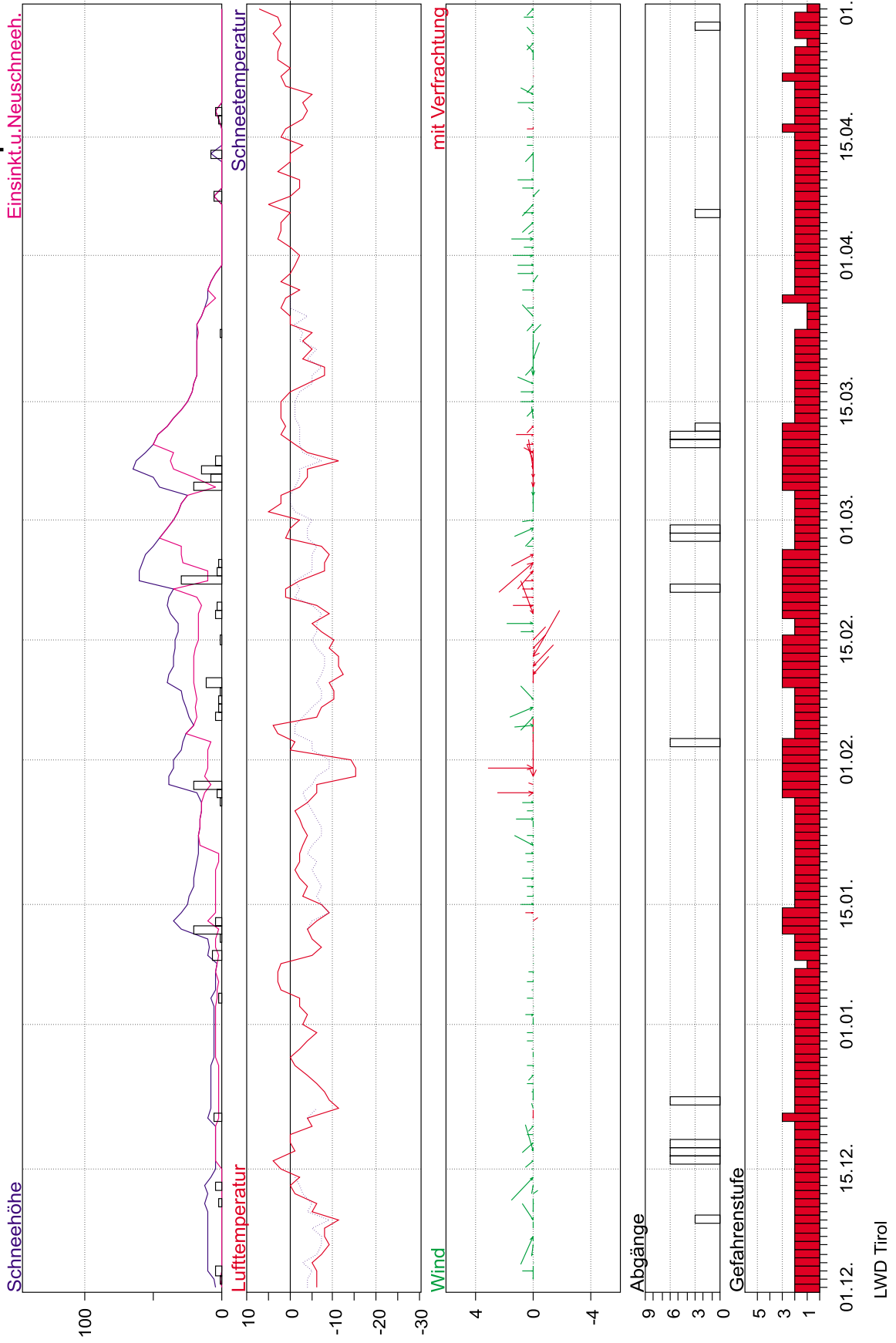
22 Dolomitenhütte

Dez 1998 - April 1999



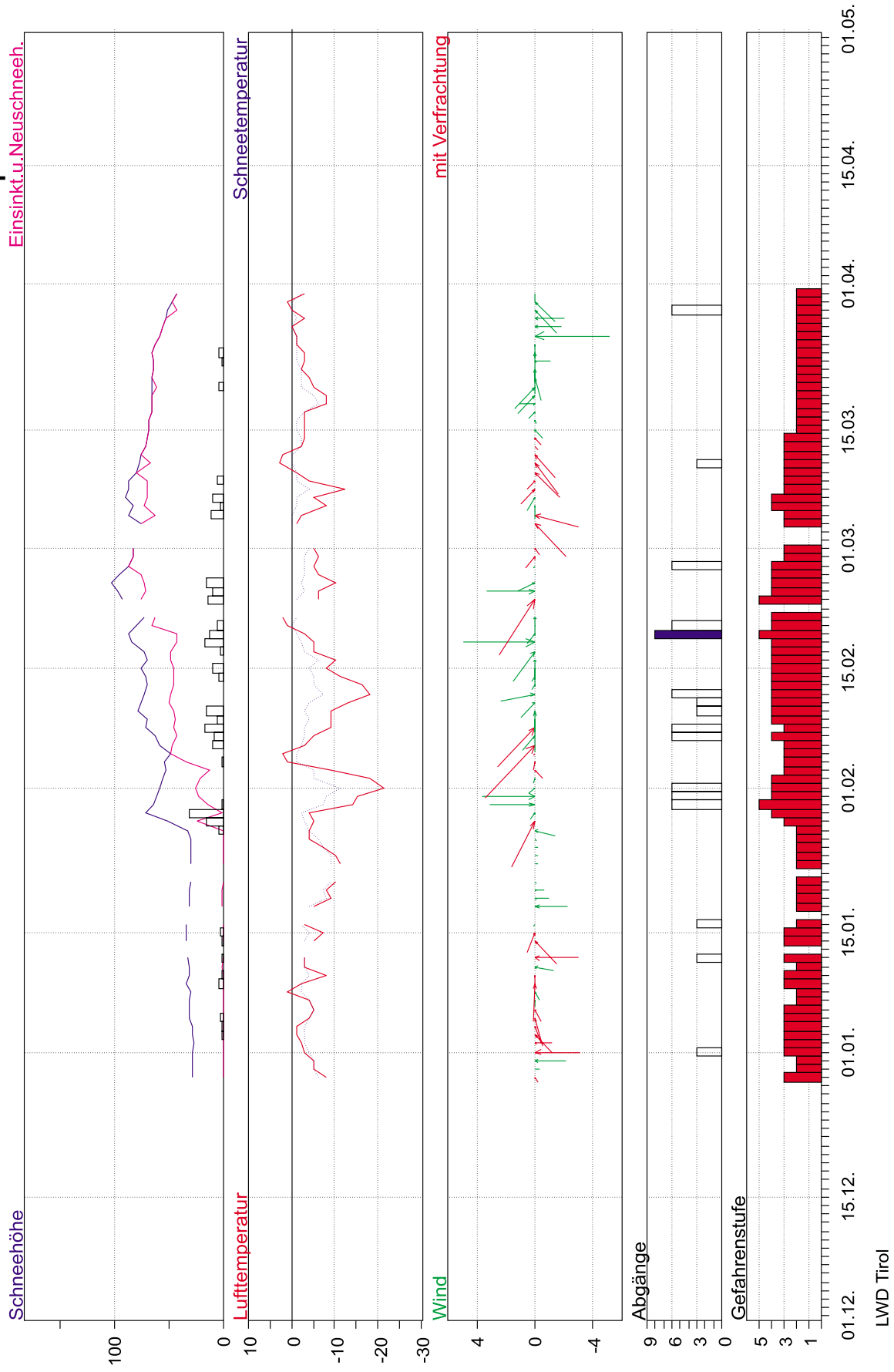
23 St. Veit i.D.

Dez 1998 - April 1999



24 Kaunertal-Feichten

Dez 1998 - April 1999



25 Heidelberger Hütte

Dez 1998 - April 1999

