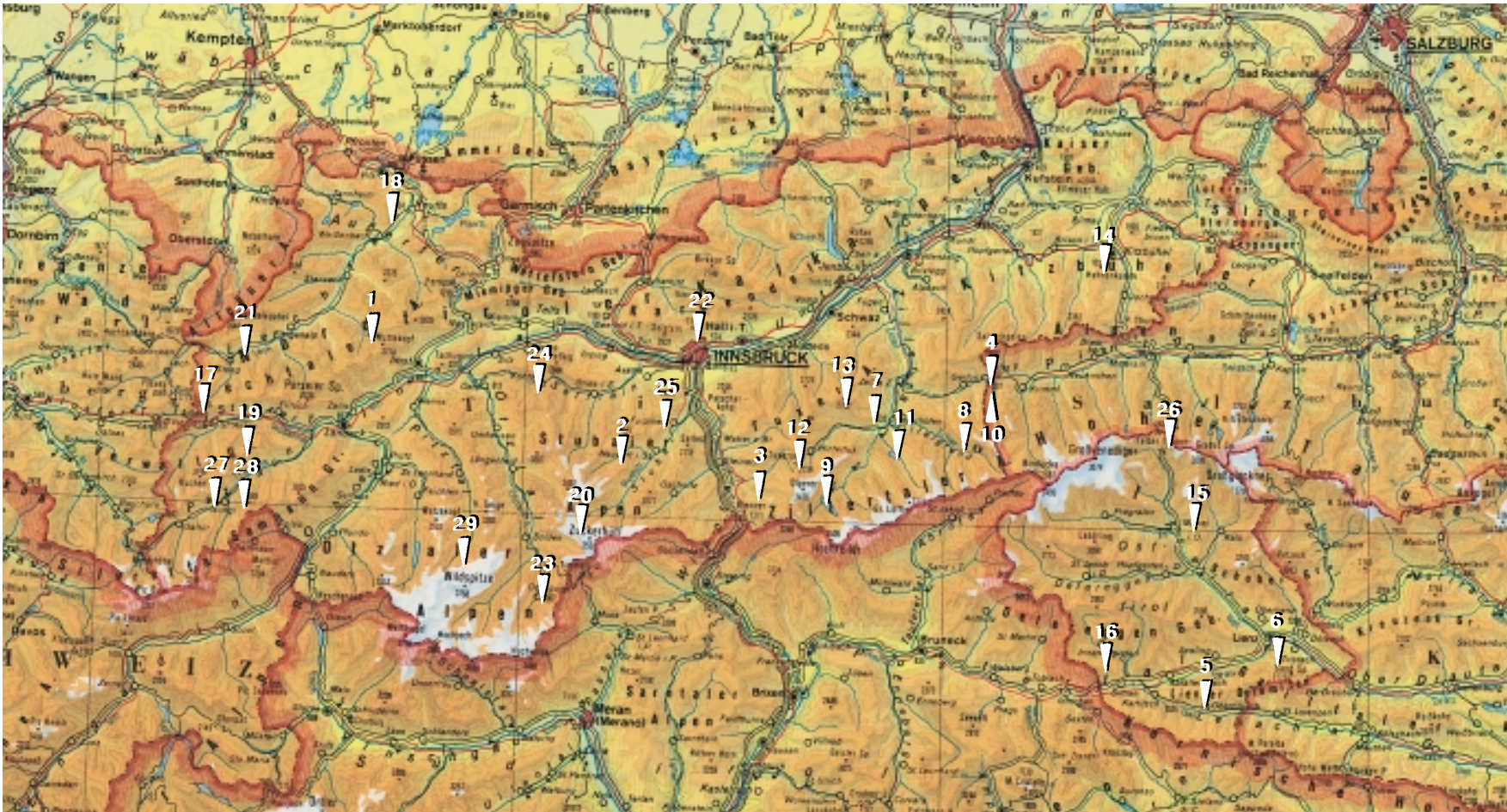


2. Schneedeckenentwicklung 1997/98



Beobachtungsstationen:

- 1 Boden
- 2 Franz-Senn-Hütte
- 3 Padaun
- 4 Gerlospäß
- 5 Obertilliach
- 6 Dolomitenhütte

Automatische Wetterstationen:

- 7 Penken
- 8 Plattkopf
- 9 Schlegeis
- 10 Durlaßboden
- 11 Stillup
- 12 Tuxerjoch

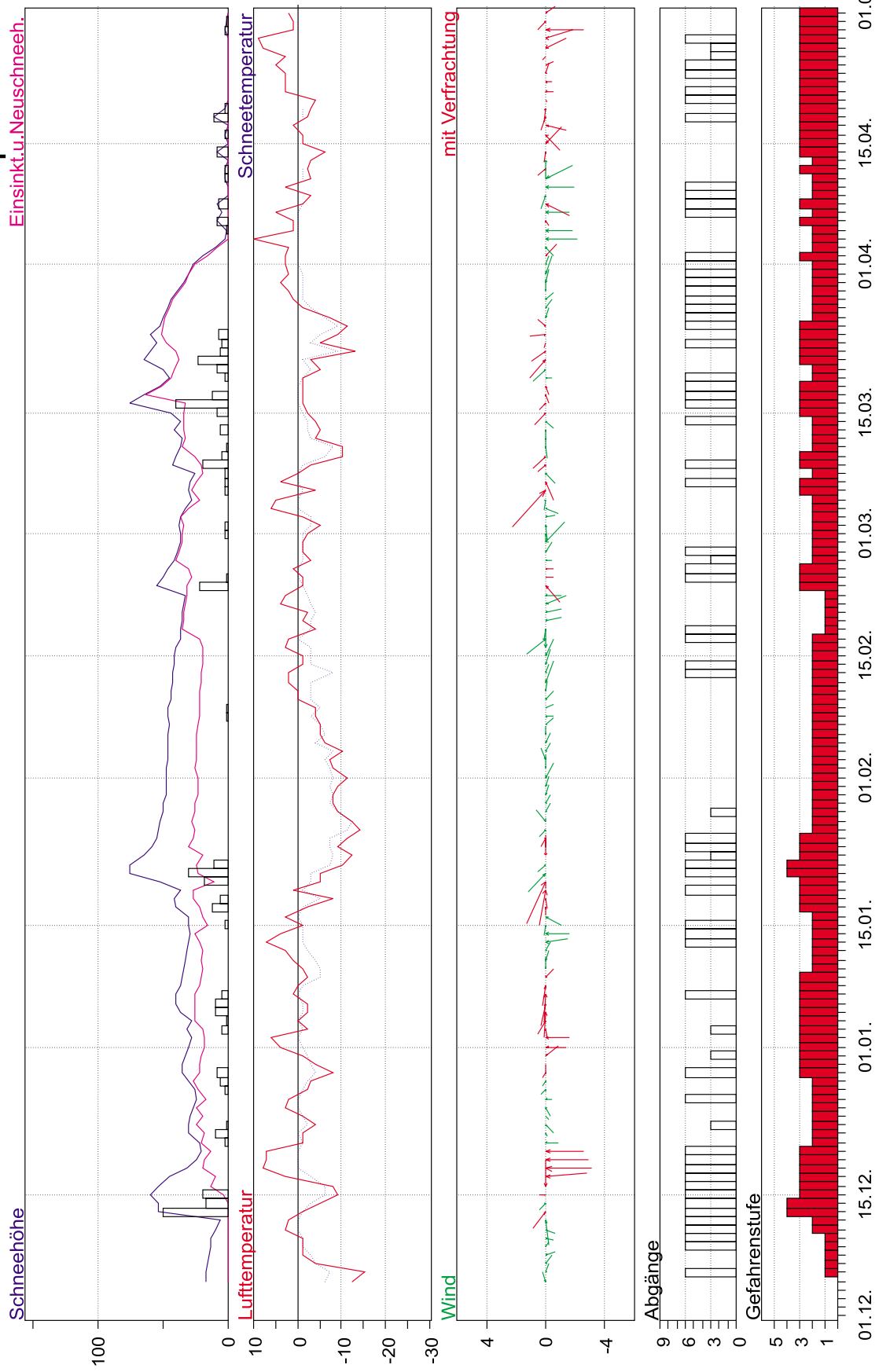
- 13 Rastkogel
- 14 Ehrenbachhöhe
- 15 Goldried-Matrei
- 16 Thurmtaler
- 17 Galzig
- 18 Hahnenkamm-Höfen
- 19 Dias-Kappl

- 20 Stubai Gletscher
 - 27 Ischgl, Madlein
 - 28 Ischgl, Idalpe
 - 29 Pitztaler Gletscher
- Beobachtungsstation
kombiniert mit automatischer
Wetterstation:

- 21 Steeg/Jöchelspitze
- 22 Nordkette/Seegrube-Hafelekar
- 23 Obergurgl/Festkogel
- 24 Kühtai/Speicher Längentahl
- 25 Schlick/Sennjoch
- 26 Felbertauerntunnel Nord-
und Südportal/Hochgasser

1 Boden Lechtal

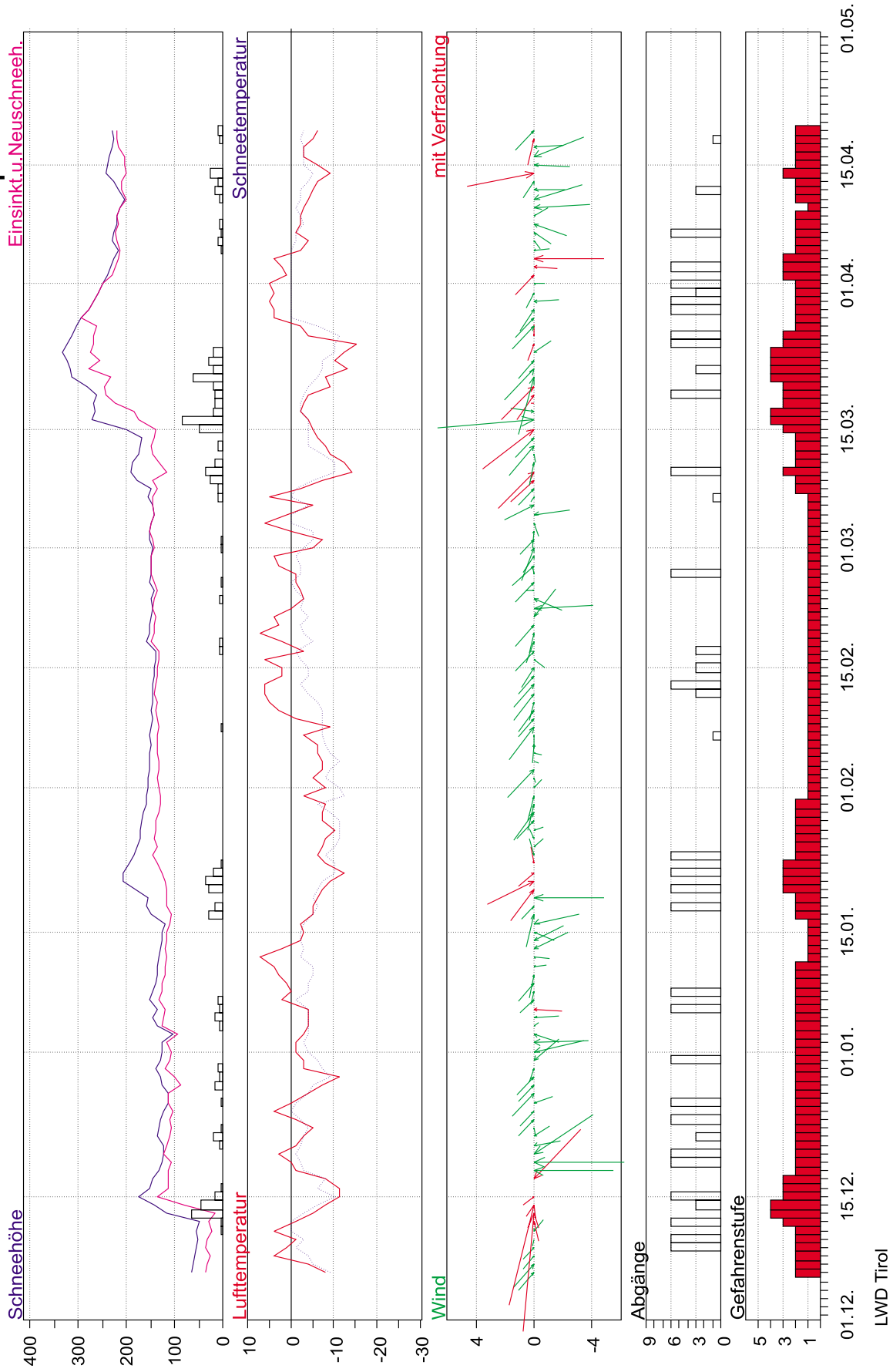
Dez 1997 - April 1998



LWD Tirol

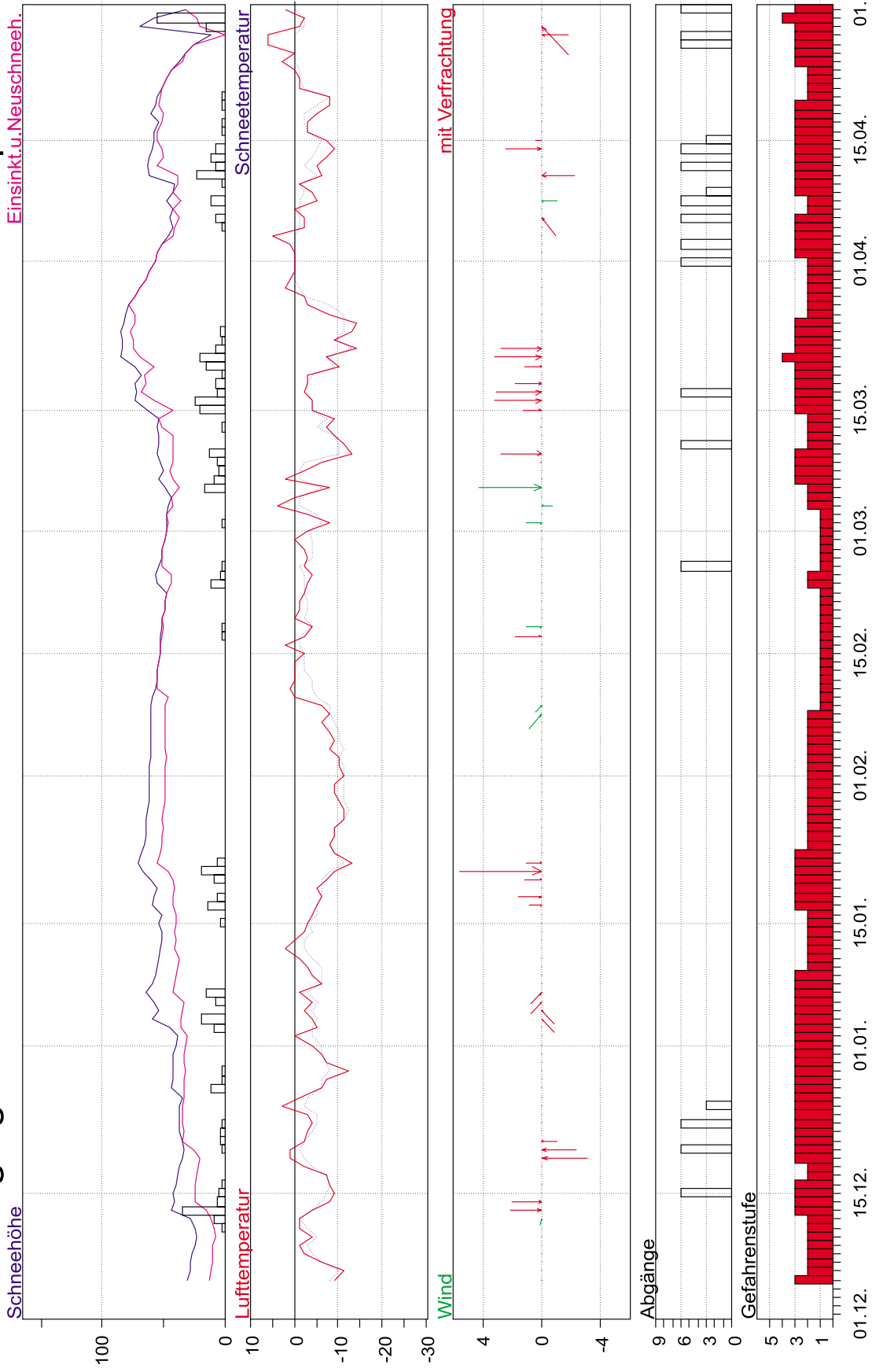
2 Nordkette

Dez 1997 - April 1998



3 Obergurgl

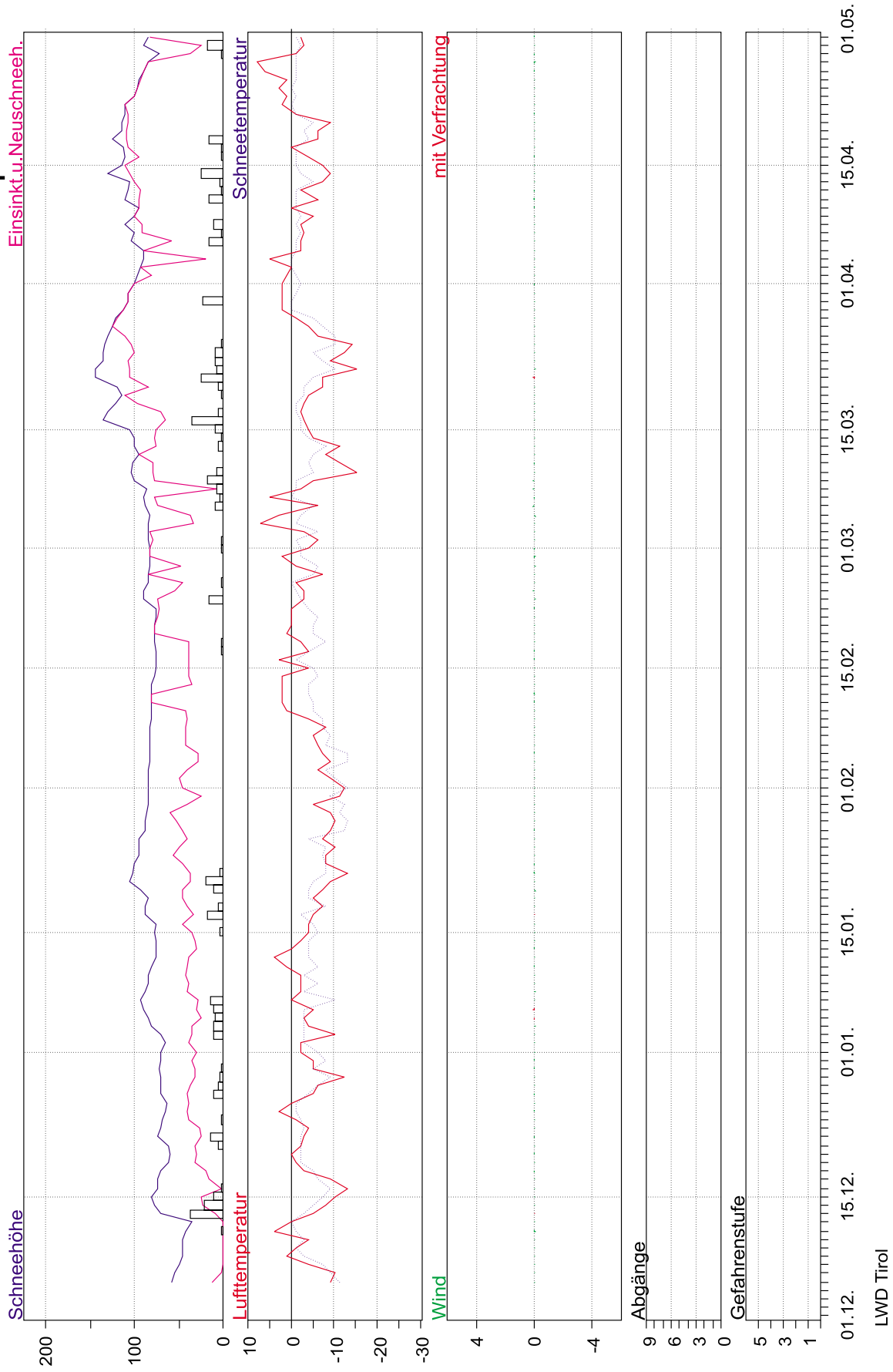
Dez 1997 - April 1998



LWD Tirol

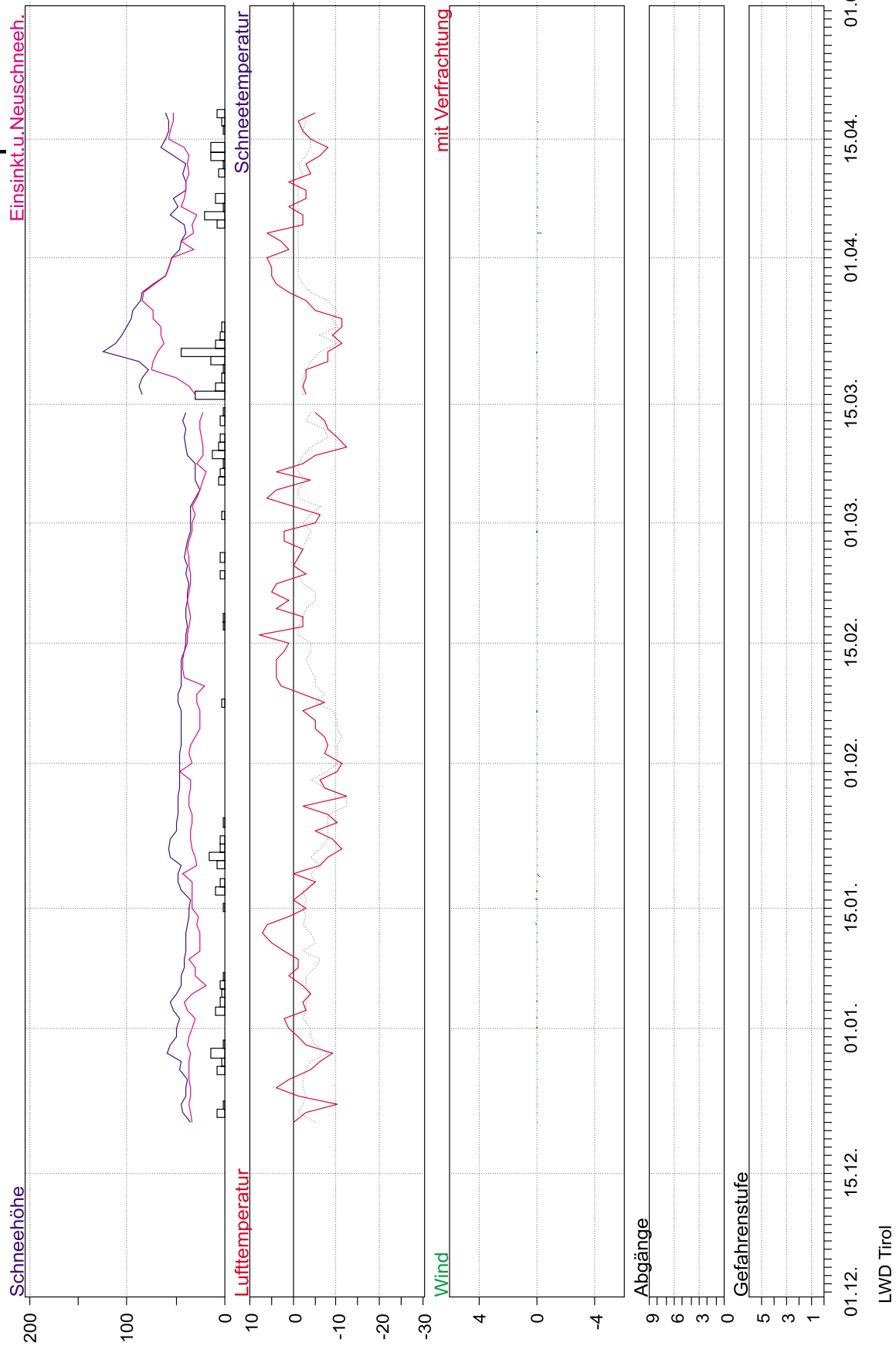
4 Kühtai

Dez 1997 - April 1998



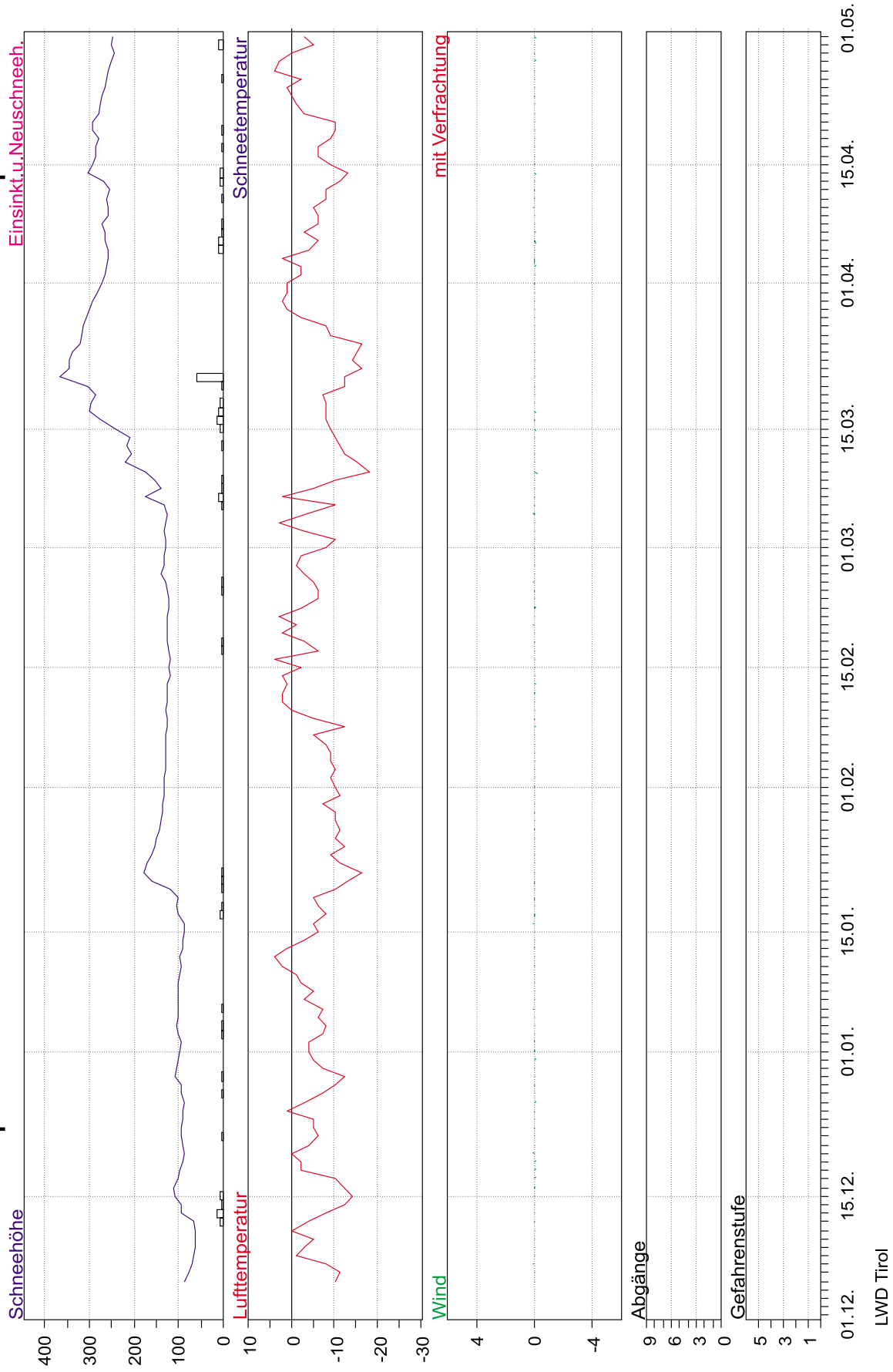
9 Penken

Dez 1997 - April 1998



10 Plattkopf

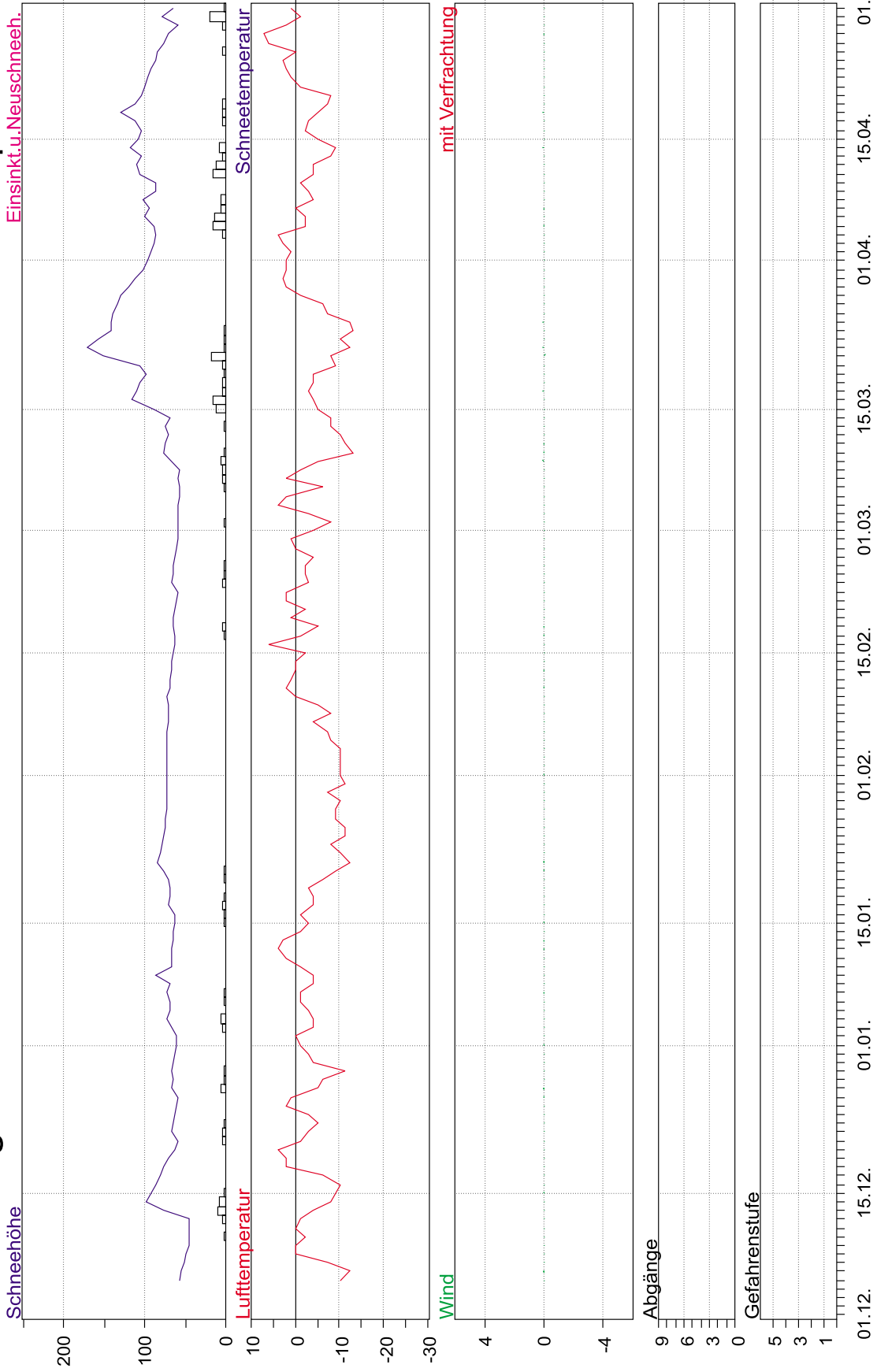
Dez 1997 - April 1998



11 Schlegeis

Dez 1997 - April 1998

Einsinkt u. Neuschnee.



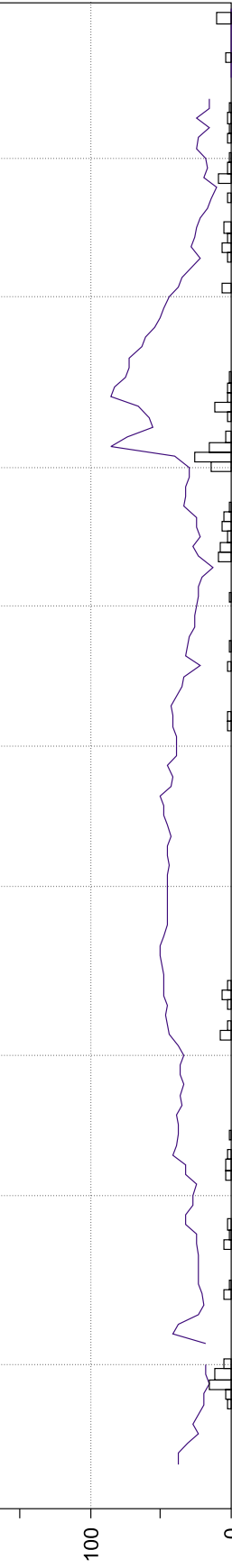
LWD Tirol

12 Durlaß Boden

Dez 1997 - April 1998

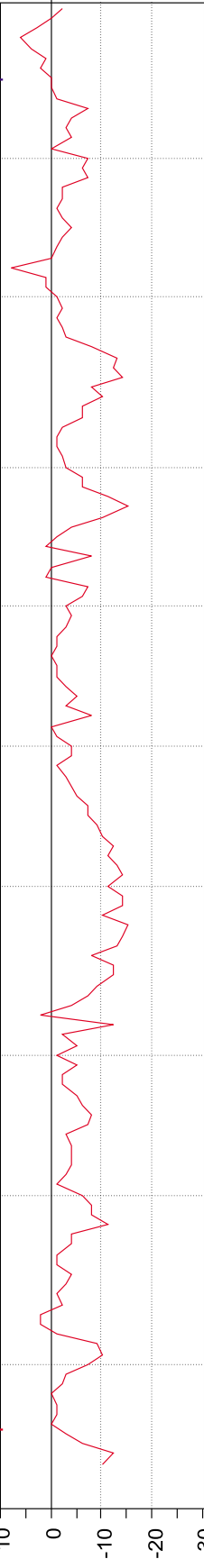
Einsinkt.u.Neuschneeh.

Schneehöhe



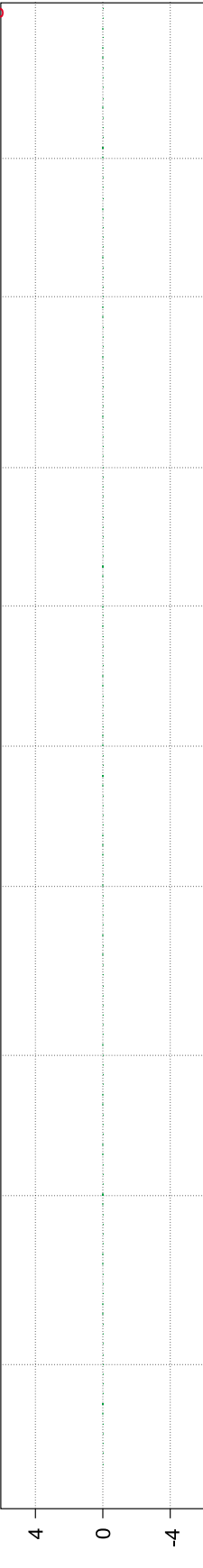
Schneetemperatur

Lufttemperatur



Wind

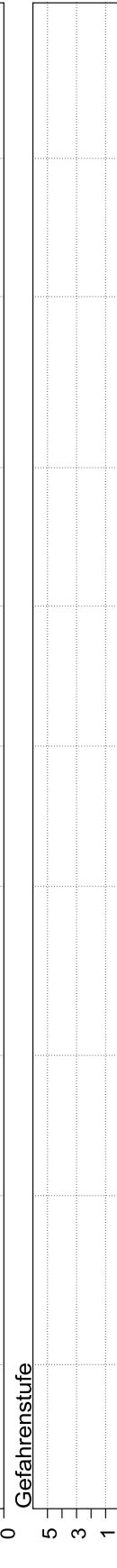
mit Verfrachtung



Abgänge



Gefahrenstufe

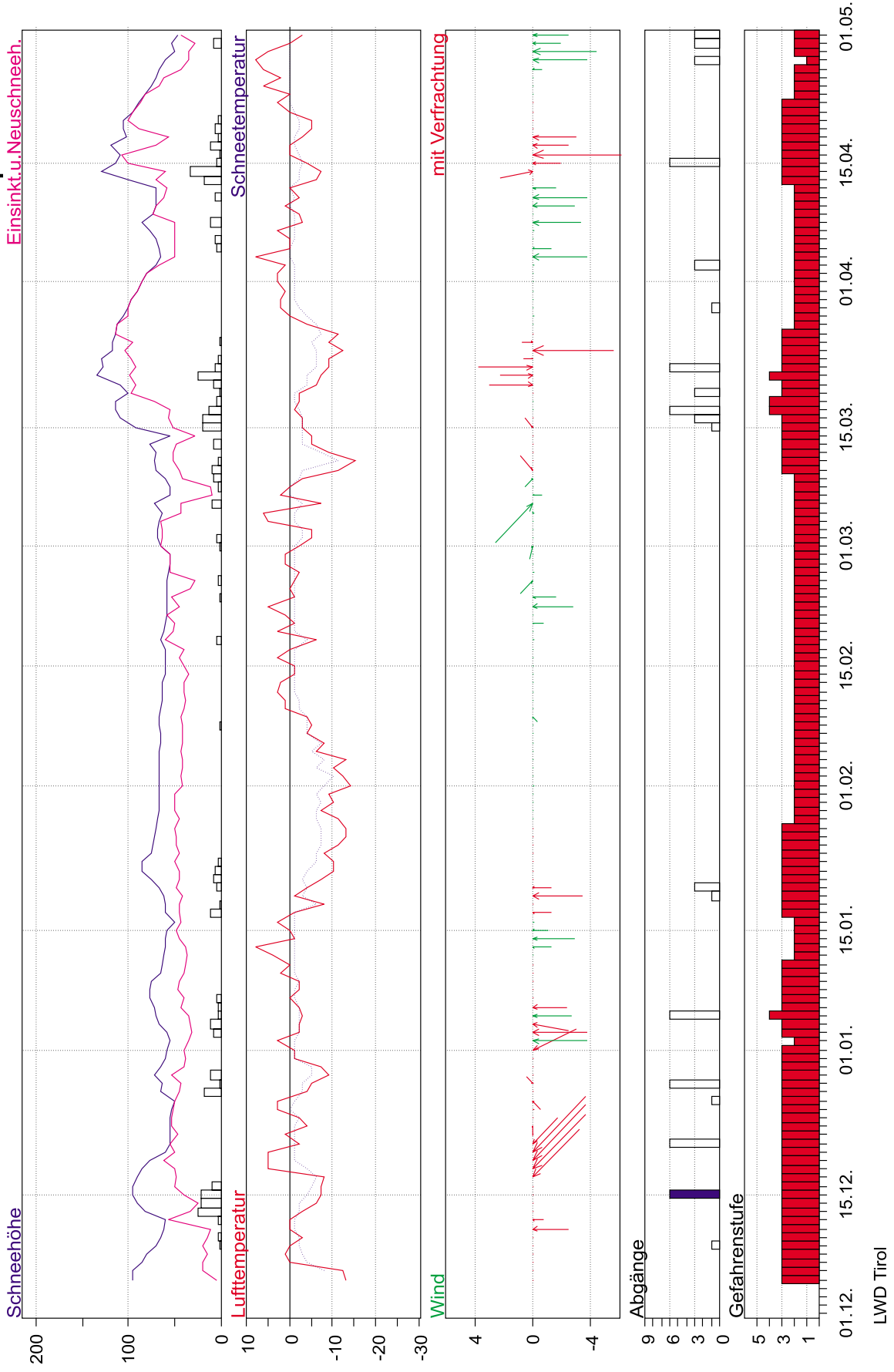


01.12. 15.12. 01.01. 15.01. 01.02. 15.02. 01.03. 15.03. 01.04. 15.04. 01.05.

LWD Tirol

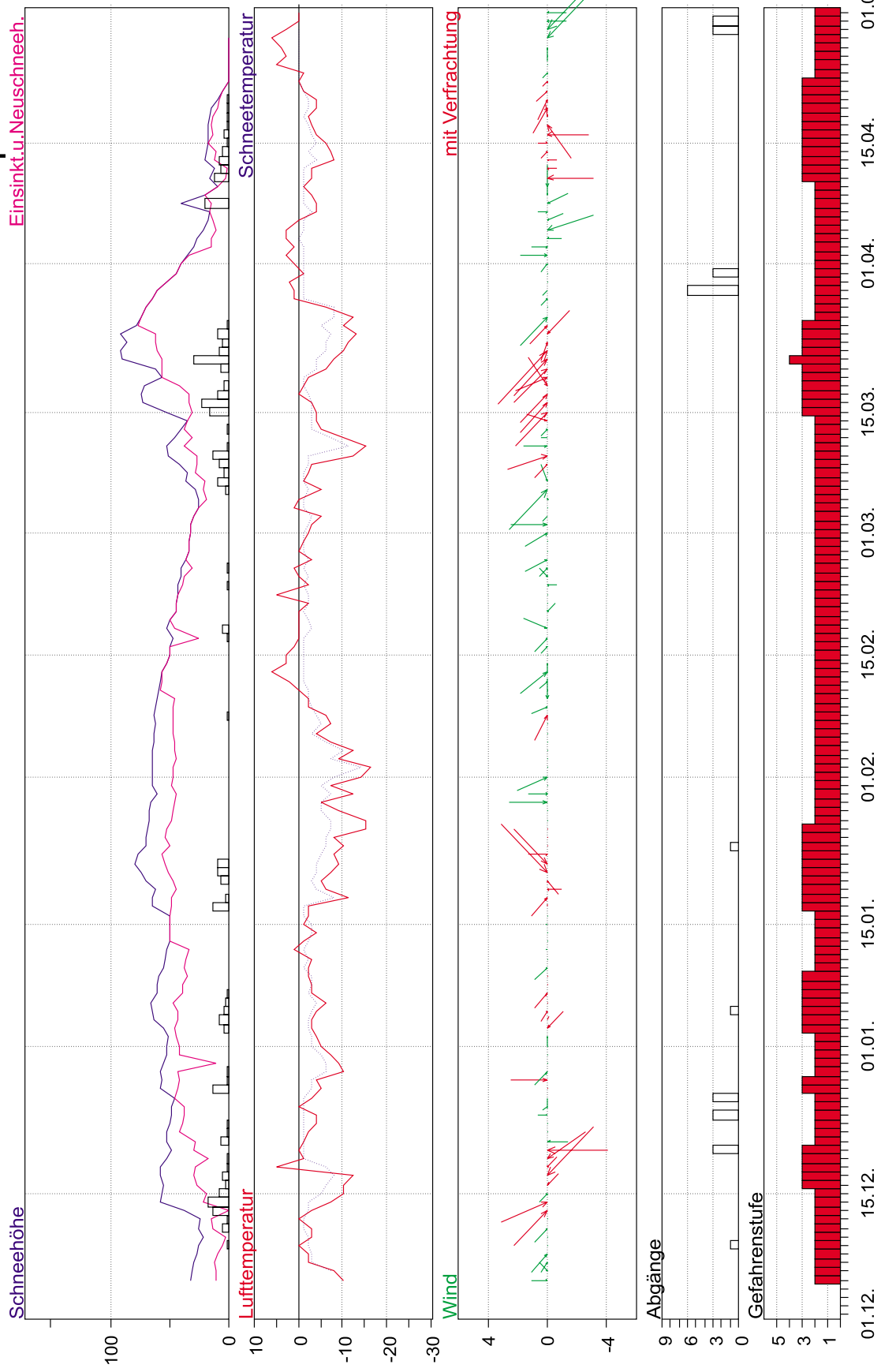
16 Felbertauern Nord

Dez 1997 - April 1998



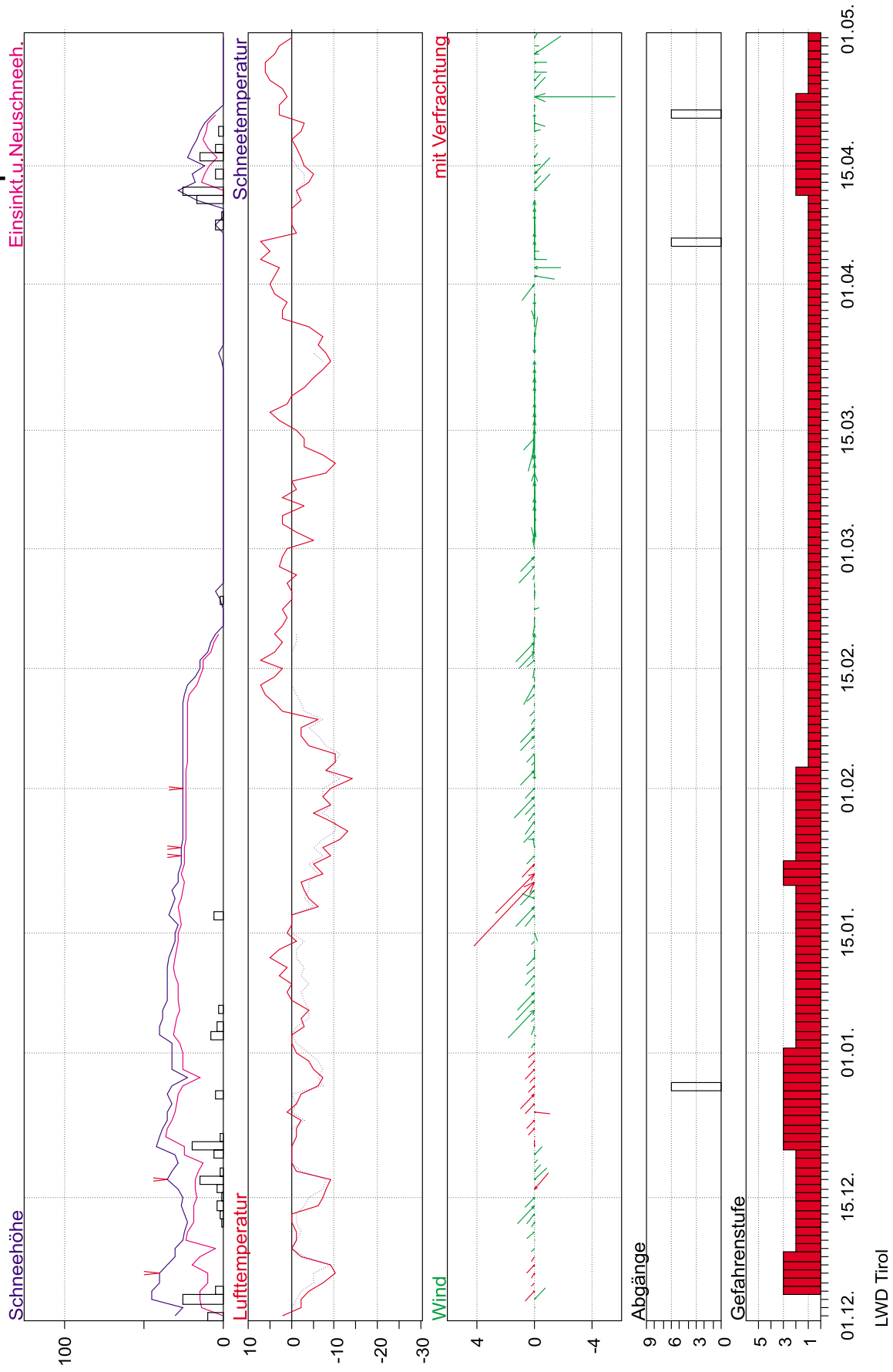
17 Felbertauern Süd

Dez 1997 - April 1998



18 Obertilliach

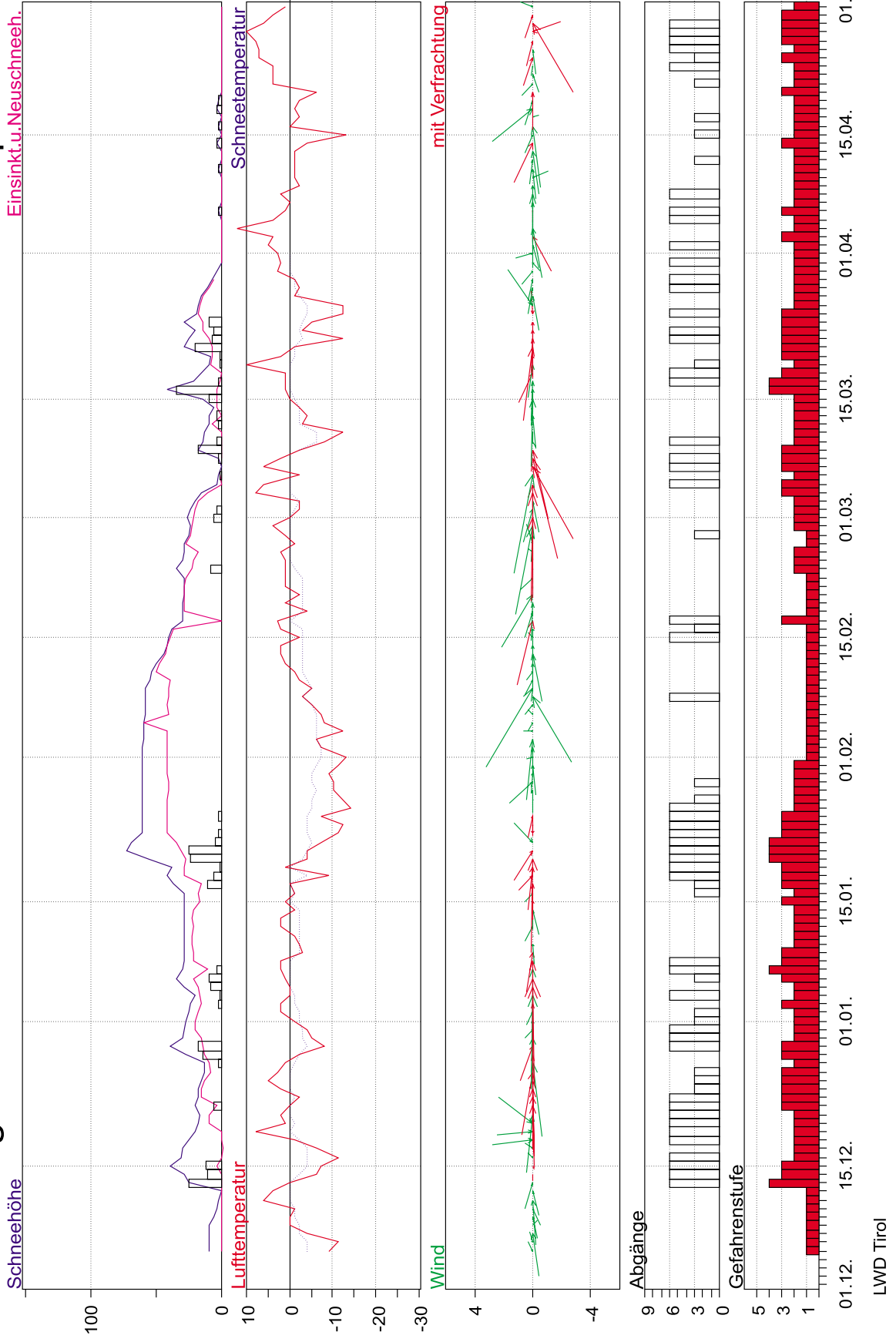
Dez 1997 - April 1998



19 Steeg

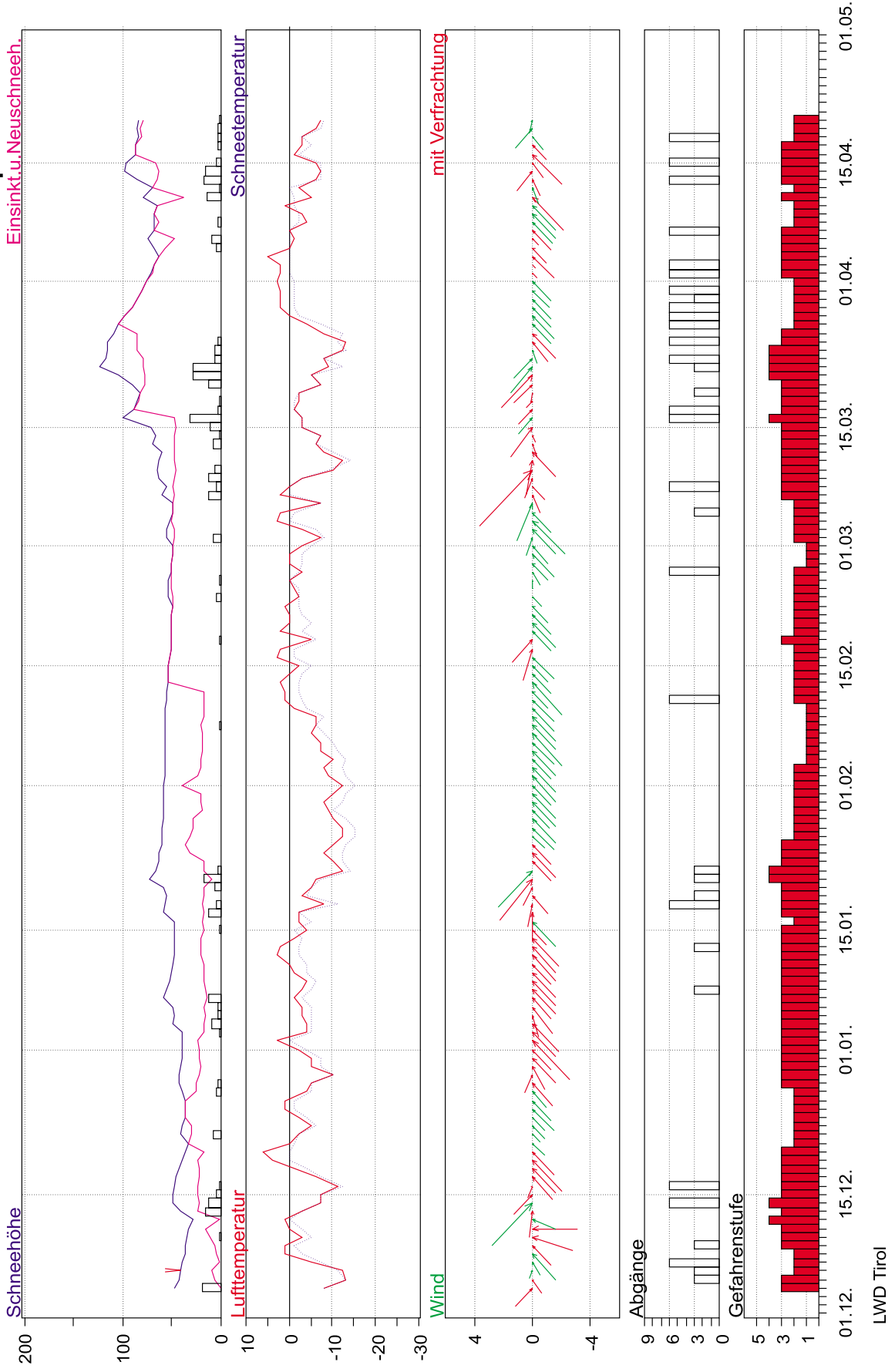
Dez 1997 - April 1998

Einsinkt.u.Neuschneeh.



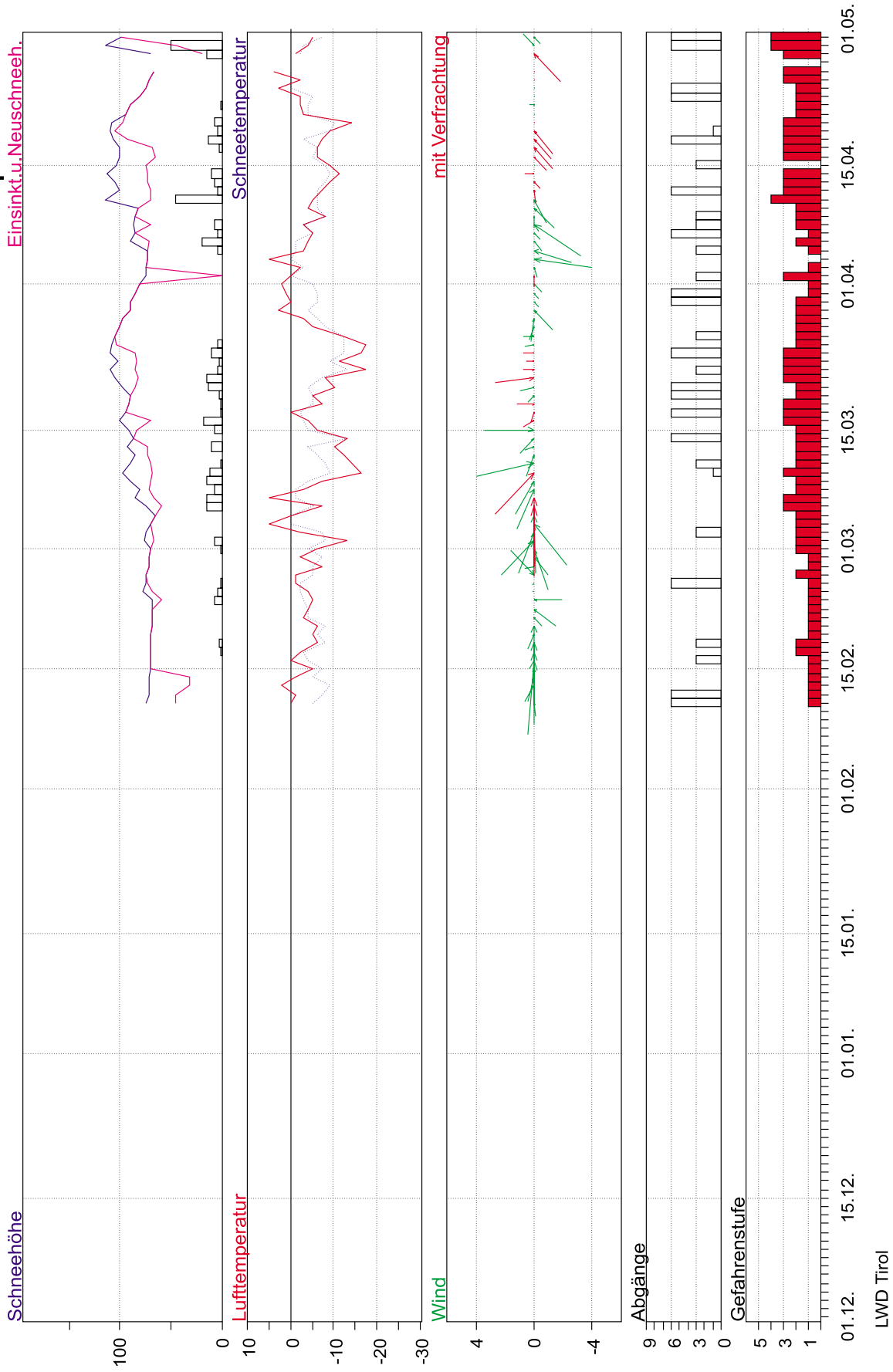
20 Schlick

Dez 1997 - April 1998



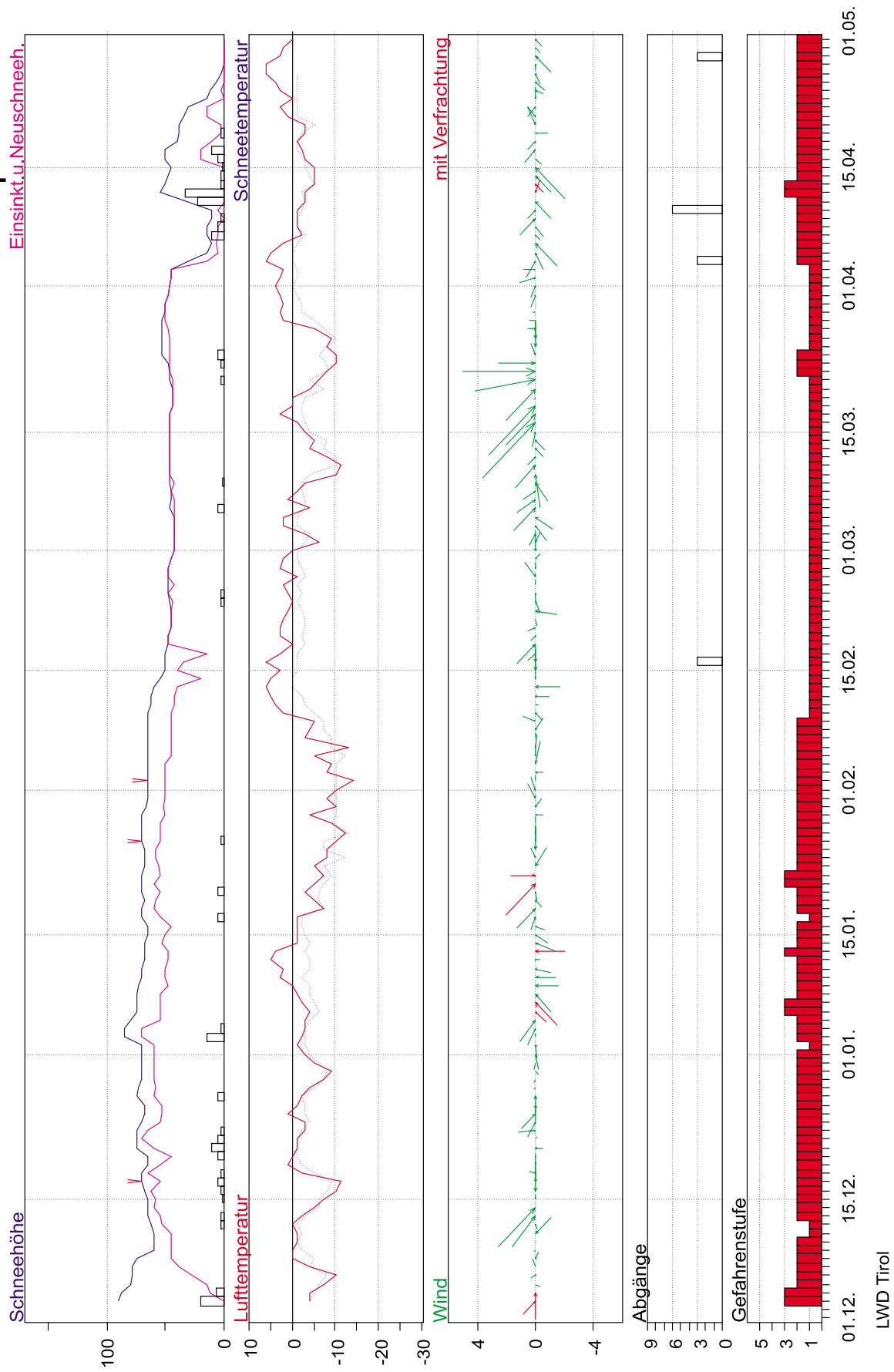
21 Franz-Senn-Hütte

Dez 1997 - April 1998



22 Dolomitenhütte

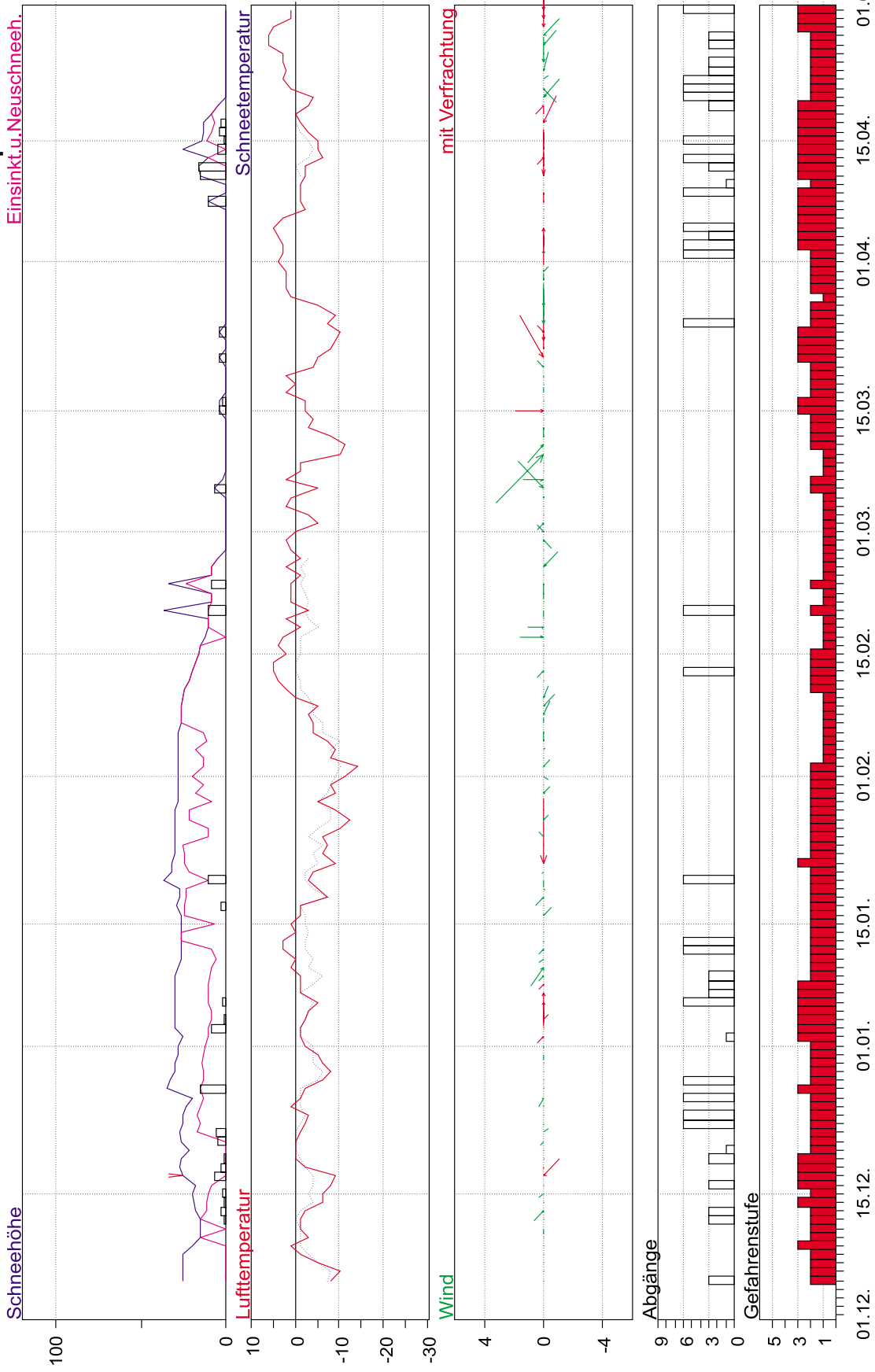
Dez 1997 - April 1998



23 St. Veit i.D.

Dez 1997 - April 1998

Einsinkt u. Neuschnee.



LWD Tirol